

## Product datasheet for **AP53764PU-N**

### RTL1 (C-term) Rabbit Polyclonal Antibody

#### Product data:

Product Type:	Primary Antibodies
Applications:	WB
Recommended Dilution:	ELISA: 1/1,000. Western blotting: 1/100-1/500.
Reactivity:	Human
Host:	Rabbit
Isotype:	Ig
Clonality:	Polyclonal
Immunogen:	KLH conjugated synthetic peptide between 1330-1358 amino acids from the C-terminal region of Human RTL1 (XP_001716834.1, A6NKG5).
Specificity:	Recognizes RTL1 (C-term).
Formulation:	PBS with 0.09% (W/V) Sodium Azide as preservative State: Aff - Purified State: Liquid purified Ig fraction
Concentration:	lot specific
Purification:	Protein A column followed by peptide Affinity purification
Conjugation:	Unconjugated
Storage:	Store the antibody undiluted at 2-8°C for one month or (in aliquots) at -20°C for longer. Avoid repeated freezing and thawing.
Stability:	Shelf life: one year from despatch.
Gene Name:	retrotransposon-like 1
Database Link:	<a href="#">Entrez Gene 388015 Human A6NKG5</a>
Background:	This gene is a retrotransposon-derived, paternally expressed imprinted gene that is highly expressed at the late fetal stage in both the fetus and placenta. It has an overlapping maternally expressed antisense transcript, which contains several microRNAs targeting the transcripts of this gene through an RNA interference (RNAi) mechanism. This gene is essential for maintenance of the fetal capillaries.

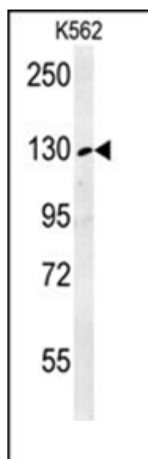


[View online »](#)

Synonyms: MAR1, MART1, PEG11

Note: **Molecular Weight:** 155177 Da

**Product images:**



Western blot analysis in K562 cell line lysates (35 g/lane) using RTL1 Antibody (C-term) Cat.-No AP53764PU-N. This demonstrates the RTL1 antibody detected the RTL1 protein (arrow).