

Product datasheet for **AP53763PU-N**

RTF1 (Center) Rabbit Polyclonal Antibody

Product data:

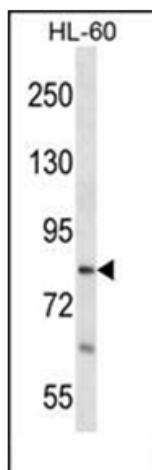
Product Type:	Primary Antibodies
Applications:	WB
Recommended Dilution:	ELISA: 1/1,000. Western blotting: 1/100-1/500.
Reactivity:	Human
Host:	Rabbit
Isotype:	Ig
Clonality:	Polyclonal
Immunogen:	KLH conjugated synthetic peptide between 441-470 amino acids from the Central region of Human RTF1
Specificity:	Recognizes RTF1 (Center).
Formulation:	PBS with 0.09% (W/V) Sodium Azide as preservative State: Aff - Purified State: Liquid purified Ig fraction
Concentration:	lot specific
Purification:	Protein A column followed by peptide Affinity purification
Conjugation:	Unconjugated
Storage:	Store the antibody undiluted at 2-8°C for one month or (in aliquots) at -20°C for longer. Avoid repeated freezing and thawing.
Stability:	Shelf life: one year from despatch.
Gene Name:	RTF1 homolog, Paf1/RNA polymerase II complex component
Database Link:	Entrez Gene 23168 Human Q92541
Background:	This locus may represent a gene involved in regulation of transcription elongation and chromatin remodeling, based on studies of similar proteins in other organisms. The encoded protein may bind single-stranded DNA.
Synonyms:	KIAA0252



[View online »](#)

Note: **Molecular Weight:** 80313 Da

Product images:



Western blot analysis in HL-60 cell line lysates (35 ug/lane) using RTF1 Antibody (Center). This demonstrates the RTF1 antibody detected the RTF1 protein (arrow).