

## Product datasheet for **AP53758PU-N**

### MRPS25 (C-term) Rabbit Polyclonal Antibody

#### Product data:

Product Type:	Primary Antibodies
Applications:	FC, IHC, WB
Recommended Dilution:	ELISA: 1/1,000. Western blotting: 1/100-1/500. Flow Cytometry: 1/10-1/50. Immunohistochemistry: 1/50-1/100.
Reactivity:	Human
Host:	Rabbit
Isotype:	Ig
Clonality:	Polyclonal
Immunogen:	KLH conjugated synthetic peptide between 144~173 amino acids from the C-terminal region of Human RT25
Specificity:	Recognizes MRPS25 (C-term).
Formulation:	PBS with 0.09% (W/V) Sodium Azide as preservative State: Aff - Purified State: Liquid purified Ig fraction
Concentration:	lot specific
Purification:	Protein A column followed by peptide Affinity purification
Conjugation:	Unconjugated
Storage:	Store the antibody undiluted at 2-8°C for one month or (in aliquots) at -20°C for longer. Avoid repeated freezing and thawing.
Stability:	Shelf life: one year from despatch.
Gene Name:	mitochondrial ribosomal protein S25
Database Link:	<a href="#">Entrez Gene 64432 Human P82663</a>



[View online »](#)

**Background:**

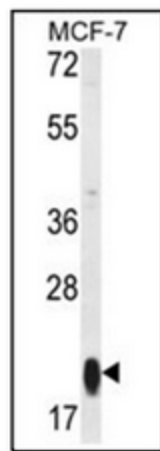
Mammalian mitochondrial ribosomal proteins are encoded by nuclear genes and help in protein synthesis within the mitochondrion. Mitochondrial ribosomes (mitoribosomes) consist of a small 28S subunit and a large 39S subunit. They have an estimated 75% protein to rRNA composition compared to prokaryotic ribosomes, where this ratio is reversed. Another difference between mammalian mitoribosomes and prokaryotic ribosomes is that the latter contain a 5S rRNA. Among different species, the proteins comprising the mitoribosome differ greatly in sequence, and sometimes in biochemical properties, which prevents easy recognition by sequence homology. This gene encodes a 28S subunit protein. A pseudogene corresponding to this gene is found on chromosome 4.

**Synonyms:**

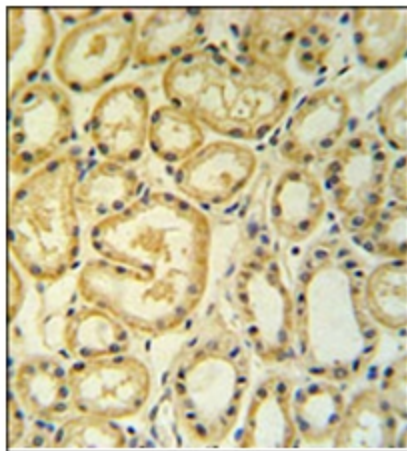
S25mt, RPMS25, MRP-S25

**Note:**

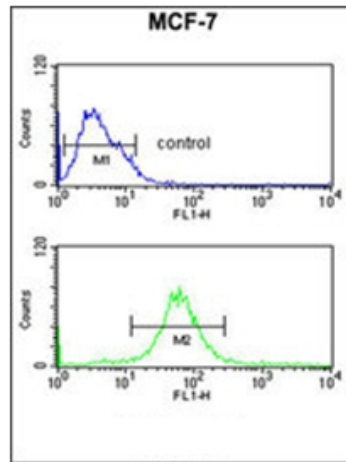
**Molecular Weight:** 20116 Da

**Product images:**

Western blot analysis in MCF-7 cell line lysates (35 ug/lane) using RT25 Antibody (C-term). RT25 (arrow) was detected using the purified Pab.



Immunohistochemistry analysis in Formalin Fixed, Paraffin Embedded Human lung tissue using RT25 antibody (C-term) followed by peroxidase conjugation of the secondary antibody and DAB staining. This data demonstrates the use of the RT25 antibody (C-term) for immunohistochemistry. Clinical relevance has not been evaluated.



Flow Cytometric analysis of MCF-7 cells (bottom histogram) using RT25 Antibody (C-term) compared to a negative control cell (top histogram). FITC-conjugated Goat-anti-Rabbit secondary antibodies were used for the analysis.