

Product datasheet for **AP53753PU-N**

RSBN1 (N-term) Rabbit Polyclonal Antibody

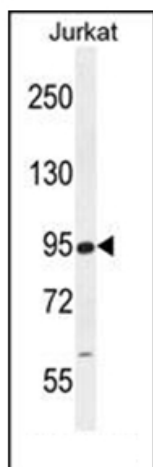
Product data:

Product Type:	Primary Antibodies
Applications:	IHC, WB
Recommended Dilution:	ELISA: 1/1,000. Western blotting: 1/100-1/500. Immunohistochemistry: 1/10-1/50.
Reactivity:	Human
Host:	Rabbit
Isotype:	Ig
Clonality:	Polyclonal
Immunogen:	KLH conjugated synthetic peptide between 10-38 amino acids from the N-terminal region of Human RSBN1
Specificity:	Recognizes RSBN1 (N-term).
Formulation:	PBS with 0.09% (W/V) Sodium Azide as preservative State: Aff - Purified State: Liquid purified Ig fraction
Concentration:	lot specific
Purification:	Protein A column followed by peptide Affinity purification
Conjugation:	Unconjugated
Storage:	Store the antibody undiluted at 2-8°C for one month or (in aliquots) at -20°C for longer. Avoid repeated freezing and thawing.
Stability:	Shelf life: one year from despatch.
Gene Name:	round spermatid basic protein 1
Database Link:	Entrez Gene 54665 Human Q5VWQ0
Synonyms:	Round spermatid basic protein 1
Note:	Molecular Weight: 90072 Da

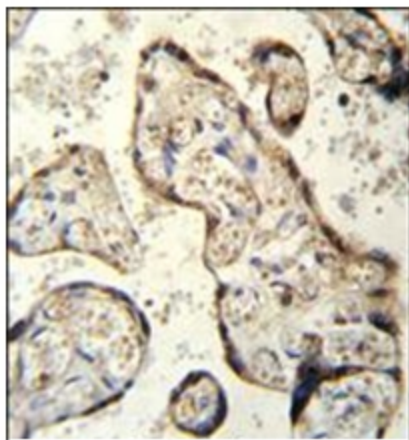


[View online »](#)

Product images:



Western blot analysis in Jurkat cell line lysates (35 ug/lane) using RSN1 Antibody (N-term). This demonstrates the RSN1 antibody detected the RSN1 protein (arrow).



Immunohistochemistry analysis in Formalin Fixed and Paraffin Embedded human placenta tissue using RSN1 Antibody (N-term) followed by peroxidase conjugation of the secondary antibody and DAB staining. This data demonstrates the use of RSN1 Antibody (N-term) for immunohistochemistry. Clinical relevance has not been evaluated.