

Product datasheet for **AP53752PU-N**

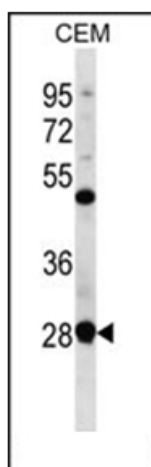
RRP7A (C-term) Rabbit Polyclonal Antibody

Product data:

Product Type:	Primary Antibodies
Applications:	WB
Recommended Dilution:	ELISA: 1/1,000. Western blotting: 1/100-1/500.
Reactivity:	Human
Host:	Rabbit
Isotype:	Ig
Clonality:	Polyclonal
Immunogen:	KLH conjugated synthetic peptide between 239-269 amino acids from the C-terminal region of Human RRP7A
Specificity:	Recognizes RRP7A (C-term).
Formulation:	PBS with 0.09% (W/V) Sodium Azide as preservative State: Aff - Purified State: Liquid purified Ig fraction
Concentration:	lot specific
Purification:	Protein A column followed by peptide Affinity purification
Conjugation:	Unconjugated
Storage:	Store the antibody undiluted at 2-8°C for one month or (in aliquots) at -20°C for longer. Avoid repeated freezing and thawing.
Stability:	Shelf life: one year from despatch.
Gene Name:	ribosomal RNA processing 7 homolog A
Database Link:	Entrez Gene 27341 Human Q9Y3A4
Synonyms:	CGI-96, BK126B4.3
Note:	Molecular Weight: 32334 Da



[View online »](#)

Product images:

Western blot analysis in CEM cell line lysates (35 ug/lane) using RRP7A Antibody (C-term). This demonstrates the RRP7A antibody detected the RRP7A protein (arrow).