

Product datasheet for **AP53751PU-N**

Peropsin (RRH) (C-term) Rabbit Polyclonal Antibody

Product data:

Product Type:	Primary Antibodies
Applications:	WB
Recommended Dilution:	ELISA: 1/1,000. Western blotting: 1/100-1/500.
Reactivity:	Human
Host:	Rabbit
Isotype:	Ig
Clonality:	Polyclonal
Immunogen:	KLH conjugated synthetic peptide between 212-240 amino acids from the C-terminal region of Human RRH
Specificity:	Recognizes RRH C-term).
Formulation:	PBS with 0.09% (W/V) Sodium Azide as preservative State: Aff - Purified State: Liquid purified Ig fraction
Concentration:	lot specific
Purification:	Protein A column followed by peptide Affinity purification
Conjugation:	Unconjugated
Storage:	Store the antibody undiluted at 2-8°C for one month or (in aliquots) at -20°C for longer. Avoid repeated freezing and thawing.
Stability:	Shelf life: one year from despatch.
Gene Name:	retinal pigment epithelium-derived rhodopsin homolog
Database Link:	Entrez Gene 10692 Human O14718



[View online »](#)

Background:

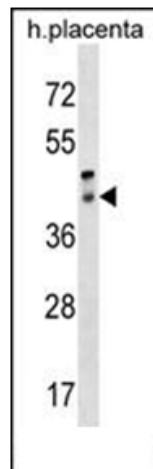
Peropsin is a visual pigment-like protein identified following large-scale sequencing of cDNAs derived from human ocular tissues. Peropsin mRNA is found in the retinal pigment epithelium (RPE) of the eye. Peropsin immunoreactivity, localizes the protein to the apical face of the RPE, and most prominently to the microvilli that surround the photoreceptor outer segments. It is thought that Peropsin may play a role in RPE physiology either in light detection as well as monitoring the concentration of retinoids (or other photoreceptor-derived compounds). It may play a role in retinal pigment epithelium physiology either by detecting light directly or by monitoring the concentration of retinoids or other photoreceptor-derived compounds.

Synonyms:

Peropsin

Note:**Molecular Weight:** 37423 Da**Protein Families:**

Druggable Genome, Transmembrane

Product images:

Western blot analysis in Human placenta tissue lysates (35 ug/lane) using RRH Antibody (C-term). This demonstrates the RRH antibody detected the RRH protein (arrow).