

## Product datasheet for **AP53749PU-N**

### RRAS (Center) Rabbit Polyclonal Antibody

#### Product data:

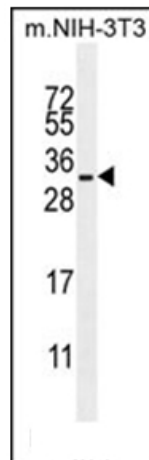
Product Type:	Primary Antibodies
Applications:	WB
Recommended Dilution:	ELISA: 1/1,000. Western blotting: 1/100-1/500.
Reactivity:	Human, Mouse
Host:	Rabbit
Isotype:	Ig
Clonality:	Polyclonal
Immunogen:	KLH conjugated synthetic peptide between 98-131 amino acids from the Central region of Human RRAS.
Specificity:	Recognizes RRAS (Center).
Formulation:	PBS with 0.09% (W/V) Sodium Azide as preservative State: Aff - Purified State: Liquid purified Ig fraction
Concentration:	lot specific
Purification:	Protein A column followed by peptide Affinity purification
Conjugation:	Unconjugated
Storage:	Store the antibody undiluted at 2-8°C for one month or (in aliquots) at -20°C for longer. Avoid repeated freezing and thawing.
Stability:	Shelf life: one year from despatch.
Gene Name:	related RAS viral (r-ras) oncogene homolog
Database Link:	<a href="#">Entrez Gene 6237 Human P10301</a>
Background:	RRAS regulates the organization of the actin cytoskeleton
Synonyms:	R-Ras
Note:	<b>Molecular Weight:</b> 23480 Da
Protein Families:	Druggable Genome



[View online »](#)

Protein Pathways: MAPK signaling pathway, Regulation of actin cytoskeleton, Tight junction

### Product images:



Western blot analysis in mouse NIH-3T3 cell line lysates (35 ug/lane) using RRAS Antibody (Center). This demonstrates the RRAS antibody detected the RRAS protein (arrow).