

Product datasheet for **AP53748PU-N**

RRAGC (Center) Rabbit Polyclonal Antibody

Product data:

Product Type:	Primary Antibodies
Applications:	IHC, WB
Recommended Dilution:	ELISA: 1/1,000. Western blotting: 1/100-1/500. Immunohistochemistry: 1/10-1/50.
Reactivity:	Human
Host:	Rabbit
Isotype:	Ig
Clonality:	Polyclonal
Immunogen:	KLH conjugated synthetic peptide between 168-198 amino acids from the Central region of Human RRAGC
Specificity:	Recognizes RRAGC (Center).
Formulation:	PBS with 0.09% (W/V) Sodium Azide as preservative State: Aff - Purified State: Liquid purified Ig fraction
Concentration:	lot specific
Purification:	Protein A column followed by peptide Affinity purification
Conjugation:	Unconjugated
Storage:	Store the antibody undiluted at 2-8°C for one month or (in aliquots) at -20°C for longer. Avoid repeated freezing and thawing.
Stability:	Shelf life: one year from despatch.
Gene Name:	Ras related GTP binding C
Database Link:	Entrez Gene 64121 Human Q9HB90
Background:	RRAGC is a monomeric guanine nucleotide-binding protein, or G protein. By binding GTP or GDP, small G proteins act as molecular switches in numerous cell processes and signaling pathways.
Synonyms:	RagC, GTR2, TIB929

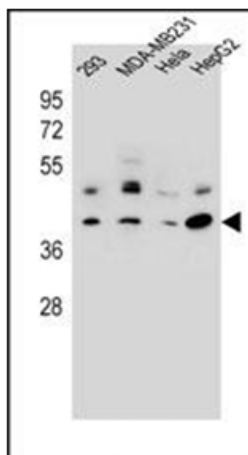


[View online »](#)

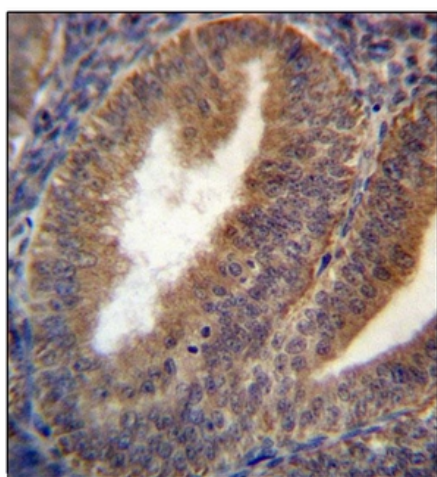
Note: **Molecular Weight:** 44224 Da

Protein Families: Transcription Factors

Product images:



Western blot analysis in 293, MDA-MB231, HeLa, HepG2 cell line lysates (35 mg/lane) using RRAGC Antibody (Center). This demonstrates the RRAGC antibody detected the RRAGC protein (arrow).



Immunohistochemistry analysis in Formalin Fixed and Paraffin Embedded Human uterus tissue using RRAGC Antibody (Center) followed by peroxidase conjugation of the secondary antibody and DAB staining. This data demonstrates the use of RRAGC Antibody (Center) for immunohistochemistry. Clinical relevance has not been evaluated.