

Product datasheet for **AP53746PU-N**

RPS6KC1 (N-term) Rabbit Polyclonal Antibody

Product data:

Product Type:	Primary Antibodies
Applications:	IHC, WB
Recommended Dilution:	ELISA: 1/1,000. Western blotting: 1/100-1/500. Immunohistochemistry: 1/10-1/50.
Reactivity:	Human, Mouse
Host:	Rabbit
Isotype:	Ig
Clonality:	Polyclonal
Immunogen:	KLH conjugated synthetic peptide between 19-47 amino acids from the N-terminal region of Human RPS6KC1.
Specificity:	Recognizes RPS6KC1 (N-term).
Formulation:	PBS with 0.09% (W/V) Sodium Azide as preservative State: Aff - Purified State: Liquid purified Ig fraction
Concentration:	lot specific
Purification:	Protein A column followed by peptide Affinity purification
Conjugation:	Unconjugated
Storage:	Store the antibody undiluted at 2-8°C for one month or (in aliquots) at -20°C for longer. Avoid repeated freezing and thawing.
Stability:	Shelf life: one year from despatch.
Gene Name:	ribosomal protein S6 kinase C1
Database Link:	Entrez Gene 320119 Mouse Entrez Gene 26750 Human Q96S38



[View online »](#)

Background:

RPS6KC1 shows homology to the S6 kinase family of serine/threonine kinases. It is a sphingosine kinase-1 (SPHK1)-binding protein that may be involved in transmitting sphingosine 1 phosphate (SPP)-mediated signaling into the cell.

Cellular localization: Cytoplasm. Membrane. Also found in some small dot-like or ring-shaped early endosome structures.

Synonyms:

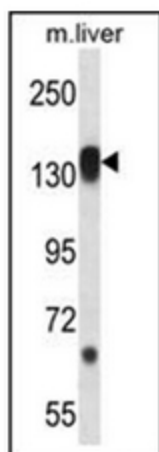
S6K-delta-1, SPHK1-binding protein

Note:

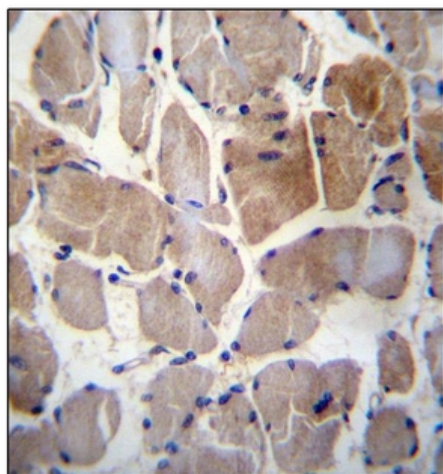
Molecular Weight: 118682 Da

Protein Families:

Druggable Genome, Protein Kinase

Product images:

Western blot analysis in Mouse liver tissue lysates (35ug/lane) using RPS6KC1 Antibody (N-term). This demonstrates the RPS6KC1 antibody detected the RPS6KC1 protein (arrow).



Immunohistochemistry analysis in Formalin Fixed, Paraffin Embedded Human skeletal muscle using RPS6KC1 Antibody (N-term) followed by peroxidase conjugation of the secondary antibody and DAB staining. This data demonstrates the use of RPS6KC1 Antibody (N-term) for immunohistochemistry. Clinical relevance has not been evaluated.