

Product datasheet for **AP53741PU-N**

RPS4Y1 (Center) Rabbit Polyclonal Antibody

Product data:

Product Type:	Primary Antibodies
Applications:	IHC, WB
Recommended Dilution:	ELISA: 1/1,000. Western blotting: 1/100-1/50. Immunohistochemistry: 1/10-1/50.
Reactivity:	Human
Host:	Rabbit
Isotype:	Ig
Clonality:	Polyclonal
Immunogen:	KLH conjugated synthetic peptide between 83-113 amino acids from the Central region of Human RPS4Y1.
Specificity:	Recognizes RPS4Y1 (Center).
Formulation:	PBS with 0.09% (W/V) Sodium Azide as preservative State: Aff - Purified State: Liquid purified Ig fraction
Concentration:	lot specific
Purification:	Protein A column followed by peptide Affinity purification
Conjugation:	Unconjugated
Storage:	Store the antibody undiluted at 2-8°C for one month or (in aliquots) at -20°C for longer. Avoid repeated freezing and thawing.
Stability:	Shelf life: one year from despatch.
Gene Name:	ribosomal protein S4, Y-linked 1
Database Link:	Entrez Gene 6192 Human P22090



[View online »](#)

Background:

Cytoplasmic ribosomes, organelles that catalyze protein synthesis, consist of a small 40S subunit and a large 60S subunit. Together these subunits are composed of 4 RNA species and approximately 80 structurally distinct proteins. This gene encodes ribosomal protein S4, a component of the 40S subunit. Ribosomal protein S4 is the only ribosomal protein known to be encoded by more than one gene, namely this gene and ribosomal protein S4, X-linked (RPS4X). The 2 isoforms encoded by these genes are not identical, but are functionally equivalent. Ribosomal protein S4 belongs to the S4E family of ribosomal proteins. It has been suggested that haploinsufficiency of the ribosomal protein S4 genes plays a role in Turner syndrome; however, this hypothesis is controversial. As is typical for genes encoding ribosomal proteins, there are multiple processed pseudogenes of this gene dispersed through the genome.

Synonyms:

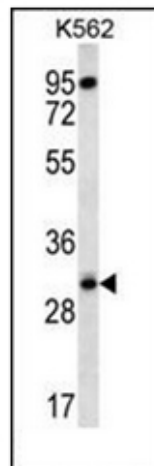
PRO2646, 40S ribosomal protein S4 Y isoform 1

Note:

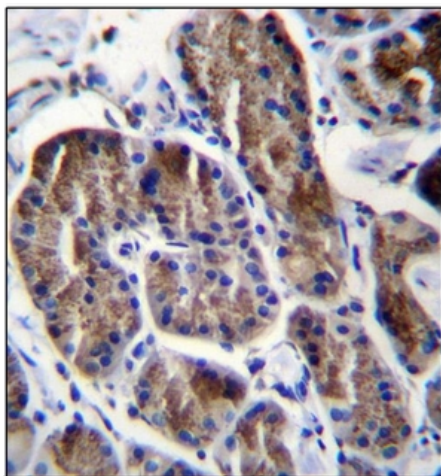
Molecular Weight: 29456 Da

Protein Pathways:

Ribosome

Product images:

Western blot analysis in K562 cell line lysates (35 ug/lane) using RPS4Y1 Antibody (Center). This demonstrates the RPS4Y1 antibody detected the RPS4Y1 protein (arrow).



Immunohistochemistry analysis in Formalin Fixed, Paraffin Embedded Human stomach tissue using RPS4Y1 Antibody (Center) followed by peroxidase conjugation of the secondary antibody and DAB staining. This data demonstrates the use of RPS4Y1 Antibody (Center) for immunohistochemistry. Clinical relevance has not been evaluated.