

Product datasheet for **AP53739PU-N**

RPS25 (N-term) Rabbit Polyclonal Antibody

Product data:

Product Type:	Primary Antibodies
Applications:	WB
Recommended Dilution:	ELISA: 1/1,000. Western blotting: 1/100-1/500.
Reactivity:	Human
Host:	Rabbit
Isotype:	Ig
Clonality:	Polyclonal
Immunogen:	KLH conjugated synthetic peptide between 7~36 amino acids from the N-terminal region of Human RPS25.
Specificity:	Recognizes RPS25 (N-term).
Formulation:	PBS with 0.09% (W/V) Sodium Azide as preservative State: Aff - Purified State: Liquid purified Ig fraction
Concentration:	lot specific
Purification:	Protein A column followed by peptide Affinity purification
Conjugation:	Unconjugated
Storage:	Store the antibody undiluted at 2-8°C for one month or (in aliquots) at -20°C for longer. Avoid repeated freezing and thawing.
Stability:	Shelf life: one year from despatch.
Gene Name:	ribosomal protein S25
Database Link:	Entrez Gene 6230 Human P62851
Background:	Ribosomes, the organelles that catalyze protein synthesis, consist of a small 40S subunit and a large 60S subunit. Together these subunits are composed of 4 RNA species and approximately 80 structurally distinct proteins. This gene encodes a ribosomal protein that is a component of the 40S subunit. The protein belongs to the S25E family of ribosomal proteins. It is located in the cytoplasm.



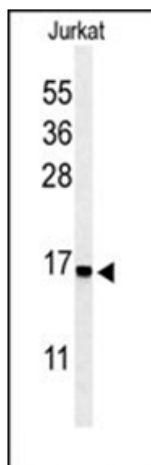
[View online »](#)

Synonyms: 40S ribosomal protein S25

Note: **Molecular Weight:** 13742 Da

Protein Pathways: Ribosome

Product images:



Western blot analysis in Jurkat cell line lysates (35 ug/lane) using RPS25 Antibody (N-term). RPS25 (arrow) was detected using the purified Pab.