

Product datasheet for **AP53733PU-N**

RPS12 (N-term) Rabbit Polyclonal Antibody

Product data:

Product Type:	Primary Antibodies
Applications:	WB
Recommended Dilution:	ELISA: 1/1,000. Western blotting: 1/100-1/500.
Reactivity:	Human, Mouse
Host:	Rabbit
Isotype:	Ig
Clonality:	Polyclonal
Immunogen:	KLH conjugated synthetic peptide between 14-44 amino acids from the N-terminal region of Human RPS12
Specificity:	Recognizes RPS12 (N-term).
Formulation:	PBS with 0.09% (W/V) Sodium Azide as preservative State: Aff - Purified State: Liquid purified Ig fraction
Concentration:	lot specific
Purification:	Protein A column followed by peptide Affinity purification
Conjugation:	Unconjugated
Storage:	Store the antibody undiluted at 2-8°C for one month or (in aliquots) at -20°C for longer. Avoid repeated freezing and thawing.
Stability:	Shelf life: one year from despatch.
Gene Name:	ribosomal protein S12
Database Link:	Entrez Gene 20042 Mouse Entrez Gene 6206 Human P25398



[View online »](#)

Background:

Ribosomes, the organelles that catalyze protein synthesis, consist of a small 40S subunit and a large 60S subunit. Together these subunits are composed of 4 RNA species and approximately 80 structurally distinct proteins. This gene encodes a ribosomal protein that is a component of the 40S subunit. The protein belongs to the S12E family of ribosomal proteins. It is located in the cytoplasm. Increased expression of this gene in colorectal cancers compared to matched normal colonic mucosa has been observed. As is typical for genes encoding ribosomal proteins, there are multiple processed pseudogenes of this gene dispersed through the genome.

Synonyms:

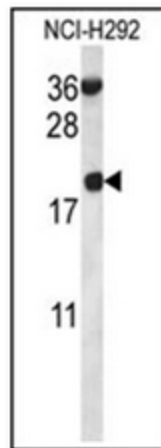
40S ribosomal protein S12

Note:

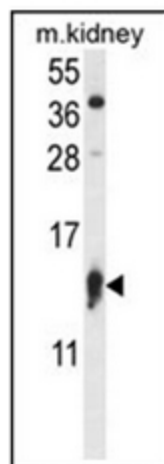
Molecular Weight: 14515 Da

Protein Pathways:

Ribosome

Product images:

Western blot analysis in NCI-H292 cell line lysates (35 ug/lane) using RPS12 Antibody (N-term). This demonstrates the RPS12 antibody detected the RPS12 protein (arrow).



Western blot analysis in Mouse Kidney tissue lysates (35 ug/lane) using RPS12 Antibody (N-term). This demonstrates the RPS12 antibody detected the RPS12 protein (arrow).