

## Product datasheet for **AP53732PU-N**

### Ribosomal protein S11 (RPS11) (Center) Rabbit Polyclonal Antibody

#### Product data:

Product Type:	Primary Antibodies
Applications:	WB
Recommended Dilution:	ELISA: 1/1,000. Western blotting: 1/100-1/500.
Reactivity:	Human
Host:	Rabbit
Isotype:	Ig
Clonality:	Polyclonal
Immunogen:	KLH conjugated synthetic peptide between 87~116 amino acids from the Central region of Human RPS11
Specificity:	Recognizes RPS11 (Center).
Formulation:	PBS with 0.09% (W/V) Sodium Azide as preservative State: Aff - Purified State: Liquid purified Ig fraction
Concentration:	lot specific
Purification:	Protein A column followed by peptide Affinity purification
Conjugation:	Unconjugated
Storage:	Store the antibody undiluted at 2-8°C for one month or (in aliquots) at -20°C for longer. Avoid repeated freezing and thawing.
Stability:	Shelf life: one year from despatch.
Gene Name:	ribosomal protein S11
Database Link:	<a href="#">Entrez Gene 6205 Human P62280</a>



[View online »](#)

**Background:**

Ribosomes, the organelles that catalyze protein synthesis, consist of a small 40S subunit and a large 60S subunit. Together these subunits are composed of 4 RNA species and approximately 80 structurally distinct proteins. This gene encodes a ribosomal protein that is a component of the 40S subunit. The protein belongs to the S17P family of ribosomal proteins. It is located in the cytoplasm. The gene product of the *E. coli* ortholog (ribosomal protein S17) is thought to be involved in the recognition of termination codons. This gene is co-transcribed with a small nucleolar RNA gene, which is located in its third intron. As is typical for genes encoding ribosomal proteins, there are multiple processed pseudogenes of this gene dispersed through the genome.

**Synonyms:**

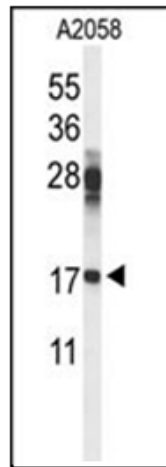
40S ribosomal protein S11

**Note:**

**Molecular Weight:** 18431 Da

**Protein Pathways:**

Ribosome

**Product images:**

Western blot analysis in A2058 cell line lysates (35 ug/lane) using RPS11 Antibody (Center). RPS11 (arrow) was detected using the purified Pab.