

Product datasheet for **AP53730PU-N**

C20orf77 (RPRD1B) (C-term) Rabbit Polyclonal Antibody

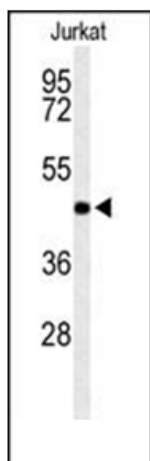
Product data:

Product Type:	Primary Antibodies
Applications:	FC, WB
Recommended Dilution:	ELISA: 1/1,000. Western blotting: 1/100-1/500. Flow Cytometry: 1/10-1/50.
Reactivity:	Human
Host:	Rabbit
Isotype:	Ig
Clonality:	Polyclonal
Immunogen:	KLH conjugated synthetic peptide between 261~290 amino acids from the C-terminal region of Human RPR1B.
Specificity:	Recognizes RPR1B (C-term).
Formulation:	PBS with 0.09% (W/V) Sodium Azide as preservative State: Aff - Purified State: Liquid purified Ig fraction
Concentration:	lot specific
Purification:	Protein A column followed by peptide Affinity purification
Conjugation:	Unconjugated
Storage:	Store the antibody undiluted at 2-8°C for one month or (in aliquots) at -20°C for longer. Avoid repeated freezing and thawing.
Stability:	Shelf life: one year from despatch.
Gene Name:	regulation of nuclear pre-mRNA domain containing 1B
Database Link:	Entrez Gene 58490 Human Q9NQG5
Synonyms:	C20orf77, CREPT
Note:	Molecular Weight: 36900 Da

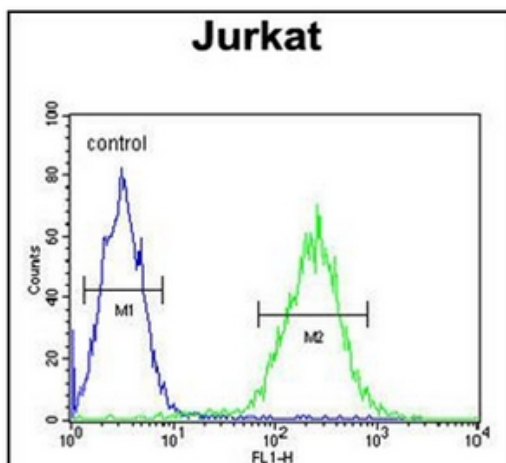


[View online »](#)

Product images:



Western blot analysis in Jurkat cell line lysates (35 ug/lane) using RPR1B Antibody (C-term). RPR1B (arrow) was detected using the purified Pab.



Flow Cytometric analysis of Jurkat cells using RPR1B Antibody (C-term) (right histogram) compared to a negative control cell (left histogram). FITC-conjugated Goat-anti-Rabbit secondary antibodies were used for the analysis.