

Product datasheet for **AP53729PU-N**

RPP38 (C-term) Rabbit Polyclonal Antibody

Product data:

Product Type:	Primary Antibodies
Applications:	WB
Recommended Dilution:	ELISA: 1/1,000. Western blotting: 1/100-1/500.
Reactivity:	Human
Host:	Rabbit
Isotype:	Ig
Clonality:	Polyclonal
Immunogen:	KLH conjugated synthetic peptide between 255-283 amino acids from the C-terminal region of Human RPP38
Specificity:	Recognizes RPP38 (C-term).
Formulation:	PBS with 0.09% (W/V) Sodium Azide as preservative State: Aff - Purified State: Liquid purified Ig fraction
Concentration:	lot specific
Purification:	Protein A column followed by peptide Affinity purification
Conjugation:	Unconjugated
Storage:	Store the antibody undiluted at 2-8°C for one month or (in aliquots) at -20°C for longer. Avoid repeated freezing and thawing.
Stability:	Shelf life: one year from despatch.
Gene Name:	ribonuclease P/MRP subunit p38
Database Link:	Entrez Gene 10557 Human P78345
Background:	Component of ribonuclease P, a protein complex that generates mature tRNA molecules by cleaving their 5'-ends. RPP38 may associate transiently with RNase P RNA as a factor involved in the transport of H1 RNA to the putative site of its assembly in the cell, the nucleolus.
Synonyms:	OTTHUMP00000019202; RP11-455B2.5

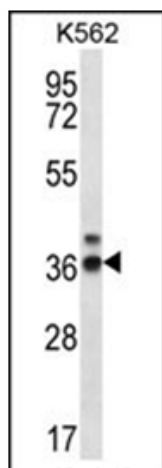


[View online »](#)

Note: **Molecular Weight:** 31834 Da

Protein Families: Druggable Genome

Product images:



Western blot analysis of RPP38 Antibody (C-term) in K562 cell line lysates (35ug/lane). This demonstrates the RPP38 antibody detected the RPP38 protein (arrow).