

Product datasheet for **AP53727PU-N**

RPLP2 (N-term) Rabbit Polyclonal Antibody

Product data:

Product Type:	Primary Antibodies
Applications:	WB
Recommended Dilution:	ELISA: 1/1,000. Western Blot 1/100-1/500.
Reactivity:	Human
Host:	Rabbit
Isotype:	Ig
Clonality:	Polyclonal
Immunogen:	KLH conjugated synthetic peptide between 20~49 amino acids from the N-terminal region of Human RPLP2.
Specificity:	Recognizes Human RPLP2 (N-Term).
Formulation:	PBS containing 0.09% (W/V) Sodium Azide as preservative State: Aff - Purified State: Liquid purified Ig fraction
Concentration:	lot specific
Purification:	Protein A column followed by peptide Affinity purification
Conjugation:	Unconjugated
Storage:	Store undiluted at 2-8°C for one month or (in aliquots) at -20°C for longer. Avoid repeated freezing and thawing.
Stability:	Shelf life: one year from despatch.
Gene Name:	Homo sapiens ribosomal protein lateral stalk subunit P2 (RPLP2)
Database Link:	Entrez Gene 6181 Human P05387



[View online »](#)

Background: RPLP2 consist of a small 40S subunit and a large 60S subunit. Together these subunits are composed of 4 RNA species and approximately 80 structurally distinct proteins. This protein encodes a ribosomal phosphoprotein that is a component of the 60S subunit. The protein, which is a functional equivalent of the E. coli L7/L12 ribosomal protein, belongs to the L12P family of ribosomal proteins. It plays an important role in the elongation step of protein synthesis. Unlike most ribosomal proteins, which are basic, the encoded protein is acidic. Its C-terminal end is nearly identical to the C-terminal ends of the ribosomal phosphoproteins P0 and P1. The P2 protein can interact with P0 and P1 to form a pentameric complex consisting of P1 and P2 dimers, and a P0 monomer. The protein is located in the cytoplasm. As is typical for genes encoding ribosomal proteins, there are multiple processed pseudogenes of this gene dispersed through the genome.

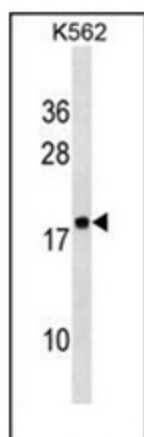
Synonyms: 60S acidic ribosomal protein P2, D11S2243E, RPP2, NY-REN-44

Note: **Molecular Weight:** 11665 Da

Protein Families: Druggable Genome

Protein Pathways: Ribosome

Product images:



Western blot analysis of RPLP2 Antibody (N-Term) in K562 cell line lysates (35ug/lane). This demonstrates the RPLP2 antibody detected the RPLP2 protein (arrow).