

Product datasheet for **AP53726PU-N**

RPLP0 (N-term) Rabbit Polyclonal Antibody

Product data:

Product Type:	Primary Antibodies
Applications:	WB
Recommended Dilution:	ELISA: 1/1,000. Western blotting: 1/100-1/500.
Reactivity:	Human
Host:	Rabbit
Isotype:	Ig
Clonality:	Polyclonal
Immunogen:	KLH conjugated synthetic peptide between 1-30 amino acids from the N-terminal region of Human RPLP0
Specificity:	Recognizes RPLP0 (N-term).
Formulation:	PBS with 0.09% (W/V) Sodium Azide as preservative State: Aff - Purified State: Liquid purified Ig fraction
Concentration:	lot specific
Purification:	Protein A column followed by peptide Affinity purification
Conjugation:	Unconjugated
Storage:	Store the antibody undiluted at 2-8°C for one month or (in aliquots) at -20°C for longer. Avoid repeated freezing and thawing.
Stability:	Shelf life: one year from despatch.
Gene Name:	ribosomal protein lateral stalk subunit P0
Database Link:	Entrez Gene 6175 Human P05388



[View online »](#)

Background:

RPLP0 was catalyze synthesis by ribosomes, consisting of a small 40S subunit and a large 60S subunit. Together these subunits are composed of 4 RNA species and approximately 80 structurally distinct proteins. This peotein encodes a ribosomal protein that is a component of the 60S subunit. The protein, which is the functional equivalent of the E. coli L10 ribosomal protein, belongs to the L10P family of ribosomal proteins. It is a neutral phosphoprotein with a C-terminal end that is nearly identical to the C-terminal ends of the acidic ribosomal phosphoproteins P1 and P2. This protein can interact with P1 and P2 to form a pentameric complex consisting of P1 and P2 dimers, and a P0 monomer. The protein is located in the cytoplasm.

Synonyms:

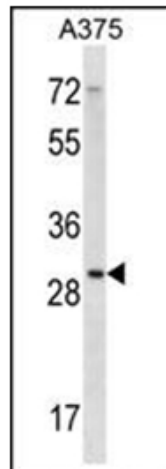
L10E; MGC88175; MGC111226; P0; PRLP0; RPP0

Note:

Molecular Weight: 34274 Da

Protein Pathways:

Ribosome

Product images:

Western blot analysis of RPLP0 Antibody (N-term) in A375 cell line lysates (35ug/lane). This demonstrates the RPLP0 antibody detected the RPLP0 protein (arrow).