

## Product datasheet for **AP53724PU-N**

### RPL9 (C-term) Rabbit Polyclonal Antibody

#### Product data:

Product Type:	Primary Antibodies
Applications:	WB
Recommended Dilution:	ELISA: 1/1,000. Western blotting: 1/100-1/500.
Reactivity:	Human
Host:	Rabbit
Isotype:	Ig
Clonality:	Polyclonal
Immunogen:	KLH conjugated synthetic peptide between 148-177 amino acids from the C-terminal region of Human RPL9
Specificity:	Recognizes RPL9 (C-term).
Formulation:	PBS with 0.09% (W/V) Sodium Azide as preservative State: Aff - Purified State: Liquid purified Ig fraction
Concentration:	lot specific
Purification:	Protein A column followed by peptide Affinity purification
Conjugation:	Unconjugated
Storage:	Store the antibody undiluted at 2-8°C for one month or (in aliquots) at -20°C for longer. Avoid repeated freezing and thawing.
Stability:	Shelf life: one year from despatch.
Gene Name:	ribosomal protein L9
Database Link:	<a href="#">Entrez Gene 6133 Human P32969</a>



[View online »](#)

**Background:**

Ribosomes, the organelles that catalyze protein synthesis, consist of a small 40S subunit and a large 60S subunit. Together these subunits are composed of 4 RNA species and approximately 80 structurally distinct proteins. This gene encodes a ribosomal protein that is a component of the 60S subunit. The protein belongs to the L6P family of ribosomal proteins. It is located in the cytoplasm. As is typical for genes encoding ribosomal proteins, there are multiple processed pseudogenes of this gene dispersed through the genome. Two alternatively spliced transcript variants encoding the same protein have been found for this gene. [provided by RefSeq].

**Synonyms:**

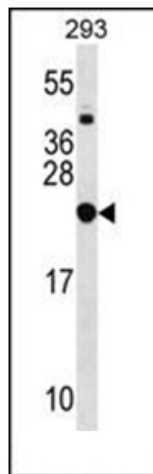
OK/SW-cl.103, RPL9P7, RPL9P8, RPL9P9

**Note:**

**Molecular Weight:** 21863 Da

**Protein Pathways:**

Ribosome

**Product images:**

Western blot analysis in 293 cell line lysates (35 ug/lane) using RPL9 Antibody (C-term). This demonstrates the RPL9 antibody detected the RPL9 protein (arrow).