

## Product datasheet for **AP53722PU-N**

### RPL5 (N-term) Rabbit Polyclonal Antibody

#### Product data:

Product Type:	Primary Antibodies
Applications:	IHC, WB
Recommended Dilution:	ELISA: 1/1,000. Western blotting: 1/100-1/500. Immunohistochemistry: 1/50-1/100.
Reactivity:	Human
Host:	Rabbit
Isotype:	Ig
Clonality:	Polyclonal
Immunogen:	KLH conjugated synthetic peptide between 2~31 amino acids from the N-terminal region of Human RPL5.
Specificity:	Recognizes RPL5 (N-term).
Formulation:	PBS with 0.09% (W/V) Sodium Azide as preservative State: Aff - Purified State: Liquid purified Ig fraction
Concentration:	lot specific
Purification:	Protein A column followed by peptide Affinity purification
Conjugation:	Unconjugated
Storage:	Store the antibody undiluted at 2-8°C for one month or (in aliquots) at -20°C for longer. Avoid repeated freezing and thawing.
Stability:	Shelf life: one year from despatch.
Gene Name:	ribosomal protein L5
Database Link:	<a href="#">Entrez Gene 6125 Human P46777</a>



[View online »](#)

**Background:**

RPL5 encodes a ribosomal protein that is a component of the 60S subunit. The protein belongs to the L18P family of ribosomal proteins. It is located in the cytoplasm. The protein binds 5S rRNA to form a stable complex called the 5S ribonucleoprotein particle (RNP), which is necessary for the transport of nonribosome-associated cytoplasmic 5S rRNA to the nucleolus for assembly into ribosomes. The protein interacts specifically with the beta subunit of casein kinase II.

**Synonyms:**

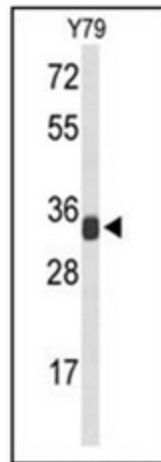
60S ribosomal protein L5

**Note:**

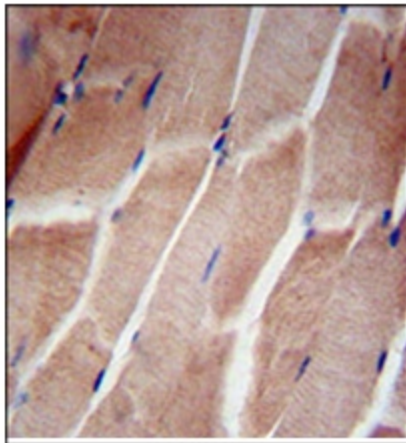
**Molecular Weight:** 34363 Da

**Protein Pathways:**

Ribosome

**Product images:**

Western blot analysis in Y79 cell line lysates (35 ug/lane) using RPL5 Antibody (N-term). RPL5 (arrow) was detected using the purified Pab.



Immunohistochemistry analysis in Formalin Fixed, Paraffin Embedded Human skeletal muscle using RPL5 Antibody (N-term) followed by peroxidase conjugation of the secondary antibody and DAB staining. This data demonstrates the use of the RPL5 Antibody (N-term) for immunohistochemistry. Clinical relevance has not been evaluated.