

## Product datasheet for **AP53721PU-N**

### RPL39 (Center) Rabbit Polyclonal Antibody

#### Product data:

Product Type:	Primary Antibodies
Applications:	WB
Recommended Dilution:	ELISA: 1/1,000. Western blotting: 1/100-1/500.
Reactivity:	Human, Mouse
Host:	Rabbit
Isotype:	Ig
Clonality:	Polyclonal
Immunogen:	KLH conjugated synthetic peptide between 22-49 amino acids from the Central region of Human RPL39
Specificity:	Recognizes RPL39 (Center).
Formulation:	PBS with 0.09% (W/V) Sodium Azide as preservative State: Aff - Purified State: Liquid purified Ig fraction
Concentration:	lot specific
Purification:	Protein A column followed by peptide Affinity purification
Conjugation:	Unconjugated
Storage:	Store the antibody undiluted at 2-8°C for one month or (in aliquots) at -20°C for longer. Avoid repeated freezing and thawing.
Stability:	Shelf life: one year from despatch.
Gene Name:	ribosomal protein L39
Database Link:	<a href="#">Entrez Gene 67248 Mouse</a> <a href="#">Entrez Gene 6170 Human</a> <a href="#">P62891</a>



[View online »](#)

**Background:**

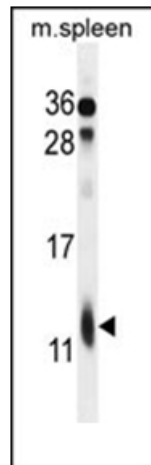
Ribosomes, the organelles that catalyze protein synthesis, consist of a small 40S subunit and a large 60S subunit. Together these subunits are composed of 4 RNA species and approximately 80 structurally distinct proteins. This gene encodes a ribosomal protein that is a component of the 60S subunit. The protein belongs to the S39E family of ribosomal proteins. It is located in the cytoplasm. In rat, the protein is the smallest, and one of the most basic, proteins of the ribosome. This gene is co-transcribed with the U69 small nucleolar RNA gene, which is located in its second intron. As is typical for genes encoding ribosomal proteins, there are multiple processed pseudogenes of this gene dispersed through the genome.

**Synonyms:**

RPL39

**Note:****Molecular Weight:** 6407 Da**Protein Pathways:**

Ribosome

**Product images:**

Western blot analysis in mouse spleen tissue lysates (35 ug/lane) using RPL39 Antibody (Center). This demonstrates the RPL39 antibody detected the RPL39 protein (arrow).