

Product datasheet for **AP53714PU-N**

RPL27A (C-term) Rabbit Polyclonal Antibody

Product data:

Product Type:	Primary Antibodies
Applications:	FC, IHC, WB
Recommended Dilution:	ELISA: 1/1,000. Western blotting: 1/100-1/500. Flow Cytometry: 1/10-1/50. Immunohistochemistry: 1/10-1/50.
Reactivity:	Hamster, Human
Host:	Rabbit
Isotype:	Ig
Clonality:	Polyclonal
Immunogen:	KLH conjugated synthetic peptide between 113-142 amino acids from the C-terminal region of Human RPL27A.
Specificity:	Recognizes RPL27A (C-term).
Formulation:	PBS with 0.09% (W/V) Sodium Azide as preservative State: Aff - Purified State: Liquid purified Ig fraction
Concentration:	lot specific
Purification:	Protein A column followed by peptide Affinity purification
Conjugation:	Unconjugated
Storage:	Store the antibody undiluted at 2-8°C for one month or (in aliquots) at -20°C for longer. Avoid repeated freezing and thawing.
Stability:	Shelf life: one year from despatch.
Gene Name:	ribosomal protein L27a
Database Link:	Entrez Gene 6157 Human P46776



[View online »](#)

Background:

Ribosomes, the organelles that catalyze protein synthesis, consist of a small 40S subunit and a large 60S subunit. Together these subunits are composed of 4 RNA species and approximately 80 structurally distinct proteins. This gene encodes a ribosomal protein that is a component of the 60S subunit. The protein belongs to the L15P family of ribosomal proteins. It is located in the cytoplasm. Variable expression of this gene in colorectal cancers compared to adjacent normal tissues has been observed, although no correlation between the level of expression and the severity of the disease has been found. As is typical for genes encoding ribosomal proteins, multiple processed pseudogenes derived from this gene are dispersed through the genome.

Synonyms:

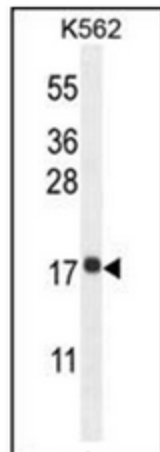
FLJ43464; MGC10850; MGC17878; MGC87238

Note:

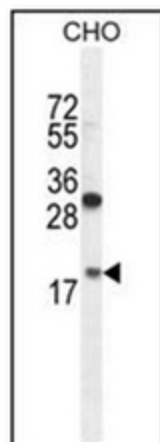
Molecular Weight: 16561 Da

Protein Pathways:

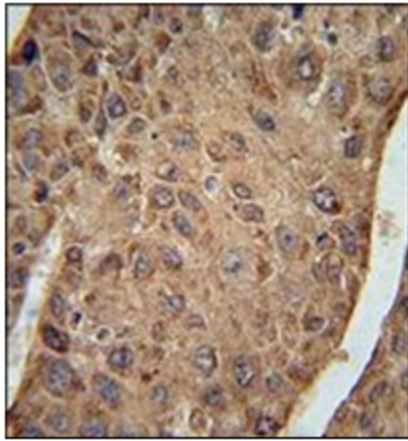
Ribosome

Product images:

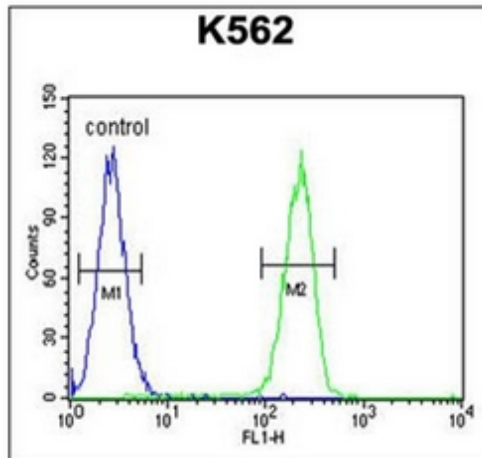
Western blot analysis in K562 cell line lysates (35 ug/lane) using RPL27A Antibody (C-term). This demonstrates the RPL27A antibody detected the RPL27A protein (arrow).



Western blot analysis in CHO cell line lysates (35 ug/lane) using RPL27A Antibody (C-term). This demonstrates the RPL27A antibody detected the RPL27A protein (arrow).



Immunohistochemistry analysis in Formalin Fixed, Paraffin Embedded Human hepatocarcinoma using RPL27A Antibody (C-term), followed by peroxidase conjugation of the secondary antibody and DAB staining. This data demonstrates the use of RPL27A Antibody (C-term) for immunohistochemistry. Clinical relevance has not been evaluated.



Flow Cytometric analysis of K562 cells (right histogram) compared to a negative control cell (left histogram) using RPL27A Antibody (C-term). FITC-conjugated Goat-anti-Rabbit secondary antibodies were used for the analysis.