

Product datasheet for **AP53712PU-N**

RPL23 (Center) Rabbit Polyclonal Antibody

Product data:

Product Type:	Primary Antibodies
Applications:	IHC, WB
Recommended Dilution:	ELISA: 1/1,000. Western blotting: 1/100-1/500. Immunohistochemistry: 1/10-1/50.
Reactivity:	Human, Mouse
Host:	Rabbit
Isotype:	Ig
Clonality:	Polyclonal
Immunogen:	KLH conjugated synthetic peptide between 48-78 amino acids from the Central region of Human RPL23
Specificity:	Recognizes RPL23 (Center).
Formulation:	PBS with 0.09% (W/V) Sodium Azide as preservative State: Aff - Purified State: Liquid purified Ig fraction
Concentration:	lot specific
Purification:	Protein A column followed by peptide Affinity purification
Conjugation:	Unconjugated
Storage:	Store the antibody undiluted at 2-8°C for one month or (in aliquots) at -20°C for longer. Avoid repeated freezing and thawing.
Stability:	Shelf life: one year from despatch.
Gene Name:	ribosomal protein L23
Database Link:	Entrez Gene 65019 Mouse Entrez Gene 9349 Human P62829



[View online »](#)

Background:

Ribosomes, the organelles that catalyze protein synthesis, consist of a small 40S subunit and a large 60S subunit. Together these subunits are composed of 4 RNA species and approximately 80 structurally distinct proteins. This gene encodes a ribosomal protein that is a component of the 60S subunit. The protein belongs to the L14P family of ribosomal proteins. It is located in the cytoplasm. This gene has been referred to as rpL17 because the encoded protein shares amino acid identity with ribosomal protein L17 from *Saccharomyces cerevisiae*; however, its official symbol is RPL23. As is typical for genes encoding ribosomal proteins, there are multiple processed pseudogenes of this gene dispersed through the genome.

Synonyms:

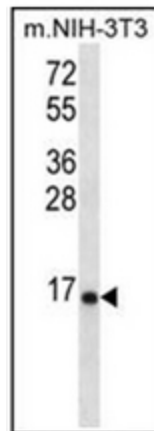
60S ribosomal protein L23, 60S ribosomal protein L17

Note:

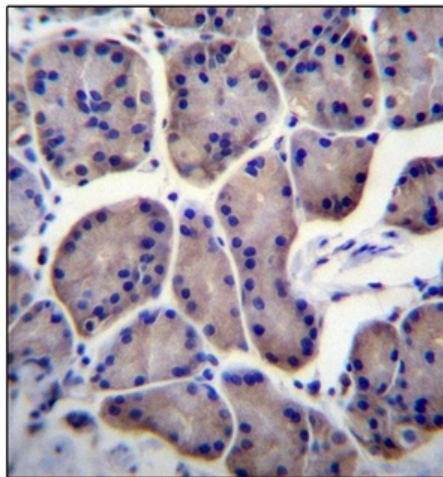
Molecular Weight: 14865 Da

Protein Pathways:

Ribosome

Product images:

Western blot analysis in mouse NIH-3T3 cell line lysates (35 ug/lane) using RPL23 Antibody (Center). This demonstrates the RPL23 antibody detected the RPL23 protein (arrow).



Immunohistochemistry analysis in Formalin Fixed, Paraffin Embedded Human stomach tissue stained with RPL23 Antibody (Center). followed by peroxidase conjugation of the secondary antibody and DAB staining. This data demonstrates the use of RPL23 Antibody (Center) for immunohistochemistry. Clinical relevance has not been evaluated.