

Product datasheet for **AP53710PU-N**

RPL18A (C-term) Rabbit Polyclonal Antibody

Product data:

Product Type:	Primary Antibodies
Applications:	FC, IHC, WB
Recommended Dilution:	ELISA: 1/1,000 Western blotting: 1/100-1/500. Flow Cytometry: 1/10-1/50. Immunohistochemistry on Paraffin Sections: 1/50-1/100.
Reactivity:	Human, Mouse
Host:	Rabbit
Isotype:	Ig
Clonality:	Polyclonal
Immunogen:	KLH conjugated synthetic peptide selected from the C-terminal region of Human RPL18A.
Specificity:	This antibody recognizes RPL18A (C-term).
Formulation:	PBS State: Aff - Purified State: Liquid purified Ig fraction Preservative: 0.09% (W/V) Sodium Azide
Concentration:	lot specific
Purification:	Protein A column, followed by peptide Affinity Purification
Conjugation:	Unconjugated
Storage:	Store the antibody undiluted at 2-8°C for one month or (in aliquots) at -20°C for longer. Avoid repeated freezing and thawing.
Stability:	Shelf life: one year from despatch.
Predicted Protein Size:	20762 Da
Gene Name:	ribosomal protein L18a
Database Link:	Entrez Gene 6142 Human Q02543



[View online »](#)

Background:

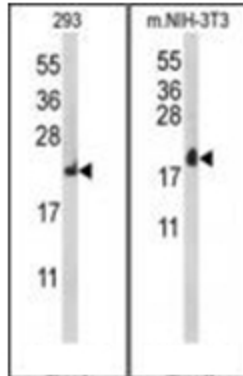
Ribosomes, the organelles that catalyze protein synthesis, consist of a small 40S subunit and a large 60S subunit. Together these subunits are composed of 4 RNA species and approximately 80 structurally distinct proteins. RPL18A is a ribosomal protein that is a component of the 60S subunit. The protein belongs to the L18AE family of ribosomal proteins. It is located in the cytoplasm.

Synonyms:

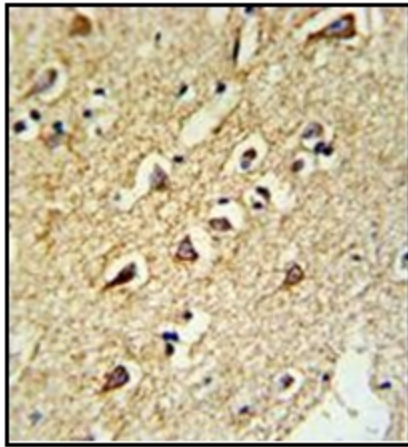
RPL18A

Protein Pathways:

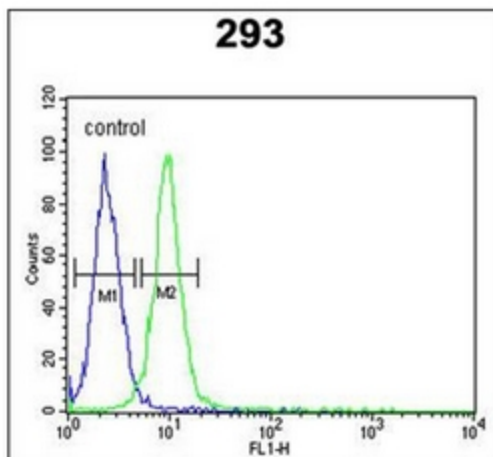
Ribosome

Product images:


Western blot analysis of RPL18A Antibody (C-term) in HeLa, 293 cell line lysates (35ug/lane). RPL18A (arrow) was detected using the purified Pab.



Formalin-Fixed, Paraffin-Embedded Human brain tissue reacted with RPL18A Antibody (C-term), which was peroxidase-conjugated to the secondary antibody, followed by DAB staining. This data demonstrates the use of this antibody for immunohistochemistry. Clinical relevance has not been evaluated.



Flow Cytometric analysis of 293 cells (right histogram) using RPL18A Antibody (C-term) compared to a negative control cell (left histogram). FITC-conjugated goat-anti-rabbit secondary antibodies were used for the analysis.