

## Product datasheet for **AP53709PU-N**

### RPL17 (C-term) Rabbit Polyclonal Antibody

#### Product data:

Product Type:	Primary Antibodies
Applications:	IHC, WB
Recommended Dilution:	<b>ELISA:</b> 1/1000. <b>Western blot:</b> 1/100 - 1/500. <b>Immunohistochemistry on paraffin sections:</b> 1/50 - 1/100.
Reactivity:	Human
Host:	Rabbit
Isotype:	Ig
Clonality:	Polyclonal
Immunogen:	KLH conjugated synthetic peptide between 155~184 amino acids from the C-terminal region of human RPL17
Specificity:	This antibody reacts to RPL17.
Formulation:	PBS State: Aff - Purified State: Liquid purified Ig fraction Preservative: 0.09% (W/V) sodium azide
Concentration:	lot specific
Purification:	Affinity chromatography on Protein A
Conjugation:	Unconjugated
Storage:	Store the antibody undiluted at 2-8°C for one month or (in aliquots) at -20°C for longer. Avoid repeated freezing and thawing.
Stability:	Shelf life: one year from despatch.
Predicted Protein Size:	21397 Da
Gene Name:	ribosomal protein L17
Database Link:	<a href="#">Entrez Gene 6139 Human P18621</a>



[View online »](#)

**Background:**

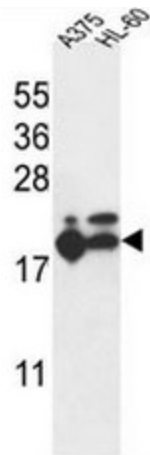
Ribosomes, the organelles that catalyze protein synthesis, consist of a small 40S subunit and a large 60S subunit. Together these subunits are composed of 4 RNA species and approximately 80 structurally distinct proteins. This gene encodes a ribosomal protein that is a component of the 60S subunit. The protein belongs to the L22P family of ribosomal proteins. It is located in the cytoplasm. This gene has been referred to as rpL23 because the encoded protein shares amino acid identity with ribosomal protein L23 from *Halobacterium marismortui*; however, its official symbol is RPL17.

**Synonyms:**

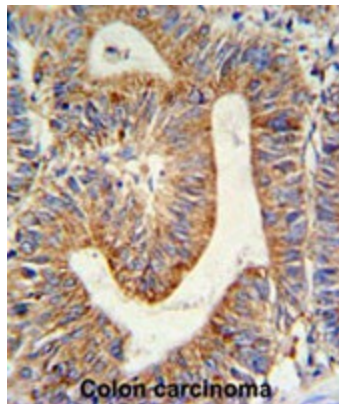
RPL-17, RPL23, 60S ribosomal protein L17, 60S ribosomal protein L23, PD-1

**Protein Pathways:**

Ribosome

**Product images:**


RPL17 Antibody (C-term) western blot analysis in A375, HL-60 cell line lysates (35ug/lane). This demonstrates the RPL17 antibody detected the RPL17 protein (arrow).



RPL17 Antibody (C-term) IHC analysis in formalin fixed and paraffin embedded colon carcinoma followed by peroxidase conjugation of the secondary antibody and DAB staining. This data demonstrates the use of the RPL17 Antibody (C-term) for immunohistochemistry. Clinical relevance has not been evaluated.