

Product datasheet for **AP53708PU-N**

RPL15 (N-term) Rabbit Polyclonal Antibody

Product data:

Product Type:	Primary Antibodies
Applications:	IHC, WB
Recommended Dilution:	ELISA: 1/1000. Western blot: 1/100 - 1/500. Immunohistochemistry on paraffin sections: 1/10 - 1/50.
Reactivity:	Human, Mouse
Host:	Rabbit
Isotype:	Ig
Clonality:	Polyclonal
Immunogen:	KLH conjugated synthetic peptide between 28-58 amino acids from the N-terminal region of human RPL15
Specificity:	This antibody reacts to RPL15.
Formulation:	PBS State: Aff - Purified State: Liquid purified Ig fraction Preservative: 0.09% (W/V) sodium azide
Concentration:	lot specific
Purification:	Affinity chromatography on Protein A
Conjugation:	Unconjugated
Storage:	Store the antibody undiluted at 2-8°C for one month or (in aliquots) at -20°C for longer. Avoid repeated freezing and thawing.
Stability:	Shelf life: one year from despatch.
Predicted Protein Size:	24146 Da
Gene Name:	ribosomal protein L15
Database Link:	Entrez Gene 66480 Mouse Entrez Gene 6138 Human P61313



[View online »](#)

Background:

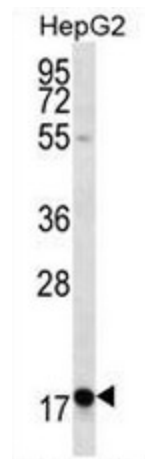
Ribosomes, the organelles that catalyze protein synthesis, consist of a small 40S subunit and a large 60S subunit. Together these subunits are composed of 4 RNA species and approximately 80 structurally distinct proteins. This gene encodes a ribosomal protein that is a component of the 60S subunit. The protein belongs to the L15E family of ribosomal proteins. It is located in the cytoplasm. This gene shares sequence similarity with the yeast ribosomal protein YL10 gene. Although this gene has been referred to as RPL10, its official symbol is RPL15. This gene has been shown to be overexpressed in some esophageal tumors compared to normal matched tissues. Transcript variants utilizing alternative polyA signals exist. As is typical for genes encoding ribosomal proteins, there are multiple processed pseudogenes of this gene dispersed through the genome.

Synonyms:

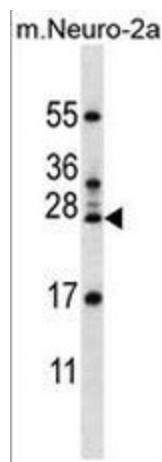
EC45, TCBAP0781

Protein Pathways:

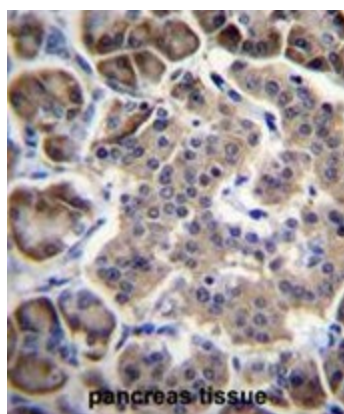
Ribosome

Product images:

RPL15 Antibody (N-term) western blot analysis in HepG2 cell line lysates (35ug/lane). This demonstrates the RPL15 antibody detected the RPL15 protein (arrow).



RPL15 Antibody (N-term) western blot analysis in mouse Neuro-2a cell line lysates (35ug/lane). This demonstrates the RPL15 antibody detected the RPL15 protein (arrow).



RPL15 Antibody (N-term) immunohistochemistry analysis in formalin fixed and paraffin embedded human pancreas tissue followed by peroxidase conjugation of the secondary antibody and DAB staining. This data demonstrates the use of RPL15 Antibody (N-term) for immunohistochemistry. Clinical relevance has not been evaluated.