

## Product datasheet for **AP53705PU-N**

### **RPH3AL (C-term) Rabbit Polyclonal Antibody**

#### **Product data:**

Product Type:	Primary Antibodies
Applications:	IHC, WB
Recommended Dilution:	<b>ELISA:</b> 1/1000. <b>Western Blot:</b> 1/100 - 1/500. <b>Immunohistochemistry on paraffin sections:</b> 1/50 - 1/100.
Reactivity:	Human
Host:	Rabbit
Isotype:	Ig
Clonality:	Polyclonal
Immunogen:	KLH conjugated synthetic peptide between 211-241 amino acids from the C-terminal region of human RPH3AL
Specificity:	This antibody reacts to RPH3AL.
Formulation:	PBS State: Aff - Purified State: Liquid purified Ig fraction Preservative: 0.09% (W/V) sodium azide.
Concentration:	lot specific
Purification:	Affinity chromatography on Protein A
Conjugation:	Unconjugated
Storage:	Store the antibody undiluted at 2-8°C for one month or (in aliquots) at -20°C for longer. Avoid repeated freezing and thawing.
Stability:	Shelf life: one year from despatch.
Predicted Protein Size:	34464 Da
Gene Name:	rabphilin 3A-like (without C2 domains)
Database Link:	<a href="#">Entrez Gene 9501 Human</a> <a href="#">Q9UNE2</a>



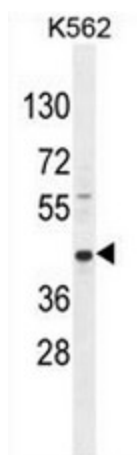
[View online »](#)

**Background:** The protein encoded by this gene plays a direct regulatory role in calcium-ion-dependent exocytosis in both endocrine and exocrine cells and plays a key role in insulin secretion by pancreatic cells. This gene is likely a tumor suppressor. Alternative splicing results in multiple transcript variants encoding distinct isoforms.

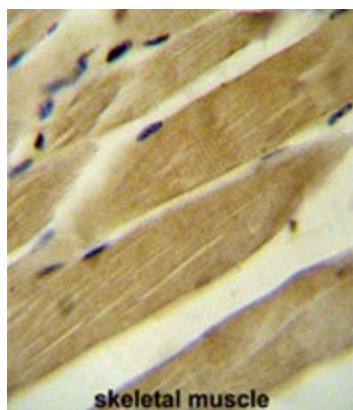
**Synonyms:** NOC2

**Protein Families:** Secreted Protein

**Product images:**



RPH3AL Antibody (C-term) western blot analysis in K562 cell line lysates (35ug/lane). This demonstrates the RPH3AL antibody detected the RPH3AL protein (arrow).



RPH3A Antibody (C-term) immunohistochemistry analysis in formalin fixed and paraffin embedded human skeletal muscle followed by peroxidase conjugation of the secondary antibody and DAB staining. This data demonstrates the use of the RPH3A Antibody (C-term) for immunohistochemistry. Clinical relevance has not been evaluated.