

Product datasheet for **AP53703PU-N**

RPAIN (N-term) Rabbit Polyclonal Antibody

Product data:

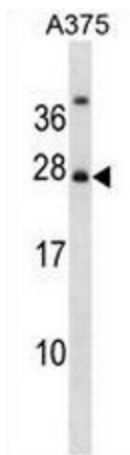
Product Type:	Primary Antibodies
Applications:	WB
Recommended Dilution:	ELISA: 1/1000. Western Blot: 1/100 - 1/500.
Reactivity:	Human
Host:	Rabbit
Isotype:	Ig
Clonality:	Polyclonal
Immunogen:	KLH conjugated synthetic peptide between 15-44 amino acids from the N-terminal region of human RPAIN
Specificity:	This antibody reacts to RPAIN.
Formulation:	PBS State: Aff - Purified State: Liquid purified Ig fraction Preservative: 0.09% (W/V) sodium azide
Concentration:	lot specific
Purification:	Affinity chromatography on Protein A
Conjugation:	Unconjugated
Storage:	Store the antibody undiluted at 2-8°C for one month or (in aliquots) at -20°C for longer. Avoid repeated freezing and thawing.
Stability:	Shelf life: one year from despatch.
Predicted Protein Size:	24784 Da
Gene Name:	RPA interacting protein
Database Link:	Entrez Gene 84268 Human Q86UA6
Background:	RPAIN mediates the import of RPA complex into the nucleus, possibly via some interaction with importin beta. Isoform 2 is sumoylated and mediates the localization of RPA complex into the PML body of the nucleus, thereby participating in RPA function in DNA metabolism.



[View online »](#)

Synonyms: RPA-interacting protein

Product images:



RPAIN Antibody (N-term) western blot analysis in A375 cell line lysates (35ug/lane). This demonstrates the RPAIN antibody detected the RPAIN protein (arrow).