

Product datasheet for **AP53702PU-N**

RPA34 (RPA2) (N-term) Rabbit Polyclonal Antibody

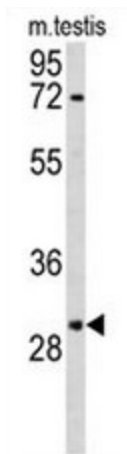
Product data:

Product Type:	Primary Antibodies
Applications:	WB
Recommended Dilution:	ELISA: 1/1000. Western Blot: 1/50-1/100.
Reactivity:	Human, Mouse
Host:	Rabbit
Isotype:	Ig
Clonality:	Polyclonal
Immunogen:	KLH conjugated synthetic peptide between 74-103 amino acids from the N-terminal region of Human RPA2
Specificity:	This antibody recognizes Human and Mouse RPA2 (N-term).
Formulation:	PBS State: Purified State: Liquid purified Ig fraction Preservative: 0.09% (W/V) Sodium Azide
Concentration:	lot specific
Purification:	Saturated Ammonium Sulfate (SAS) precipitation
Conjugation:	Unconjugated
Storage:	Store undiluted at 2-8°C for one month or (in aliquots) at -20°C for longer. Avoid repeated freezing and thawing.
Stability:	Shelf life: one year from despatch.
Predicted Protein Size:	29247 Da
Gene Name:	replication protein A2
Database Link:	Entrez Gene 19891 Mouse Entrez Gene 6118 Human P15927
Background:	RPA2 is required for DNA recombination, repair and replication. The activity of RP-A is mediated by single-stranded DNA binding and protein interactions.

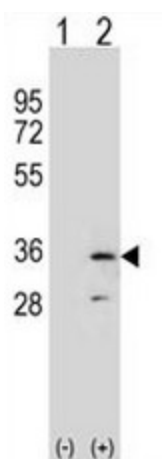


[View online »](#)

Synonyms: REPA2, RFA2, RF-A protein 2, RPA32, RP-A p32, RPA34, RP-A p34, Replication protein A
Protein Families: Druggable Genome, Stem cell - Pluripotency
Protein Pathways: DNA replication, Homologous recombination, Mismatch repair, Nucleotide excision repair

Product images:


Western blot analysis of RPA2 Antibody (N-term) in mouse testis tissue lysates (35ug/lane). RPA2 (arrow) was detected using the purified Pab.



Western blot analysis of RPA2 (arrow) using rabbit polyclonal RPA2 Antibody (N-term). 293 cell lysates (2 ug/lane) either nontransfected (Lane 1) or transiently transfected (Lane 2) with the RPA2 gene.