

Product datasheet for **AP53701PU-N**

DPCD (Center) Rabbit Polyclonal Antibody

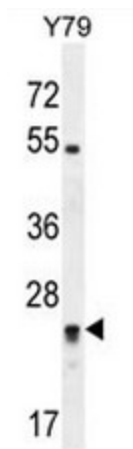
Product data:

Product Type:	Primary Antibodies
Applications:	WB
Recommended Dilution:	ELISA: 1/1000. Western Blot: 1/100 - 1/500.
Reactivity:	Human, Mouse
Host:	Rabbit
Isotype:	Ig
Clonality:	Polyclonal
Immunogen:	KLH conjugated synthetic peptide between 99-140 amino acids from the Central region of human RP11-529I10.4
Specificity:	This antibody reacts to RP11-529I10.4.
Formulation:	PBS State: Aff - Purified State: Liquid purified Ig fraction Preservative: 0.09% (W/V) sodium azide
Concentration:	lot specific
Purification:	Affinity chromatography on Protein A
Conjugation:	Unconjugated
Storage:	Store the antibody undiluted at 2-8°C for one month or (in aliquots) at -20°C for longer. Avoid repeated freezing and thawing.
Stability:	Shelf life: one year from despatch.
Predicted Protein Size:	23240 Da
Gene Name:	deleted in primary ciliary dyskinesia homolog (mouse)
Database Link:	Entrez Gene 226162 Mouse Entrez Gene 25911 Human Q9BVM2
Synonyms:	RP11-529I10.4, DKFZp566F084

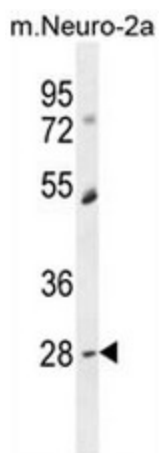


[View online »](#)

Product images:



RP11-529I10.4 Antibody (Center) western blot analysis in Y79 cell line lysates (35ug/lane). This demonstrates the RP11 antibody detected the RP11 protein (arrow).



RP11-529I10.4 Antibody (Center) western blot analysis in mouse Neuro-2a cell line lysates (35ug/lane). This demonstrates the RP11 antibody detected the RP11 protein (arrow).