

Product datasheet for **AP53700PU-N**

AKAP associated Sperm Protein (ROPN1L) (N-term) Rabbit Polyclonal Antibody

Product data:

Product Type:	Primary Antibodies
Applications:	IHC, WB
Recommended Dilution:	ELISA: 1/1000. Western Blot: 1/100 - 1/500. Immunohistochemistry on paraffin sections: 1/10 - 1/50.
Reactivity:	Human, Mouse
Host:	Rabbit
Isotype:	Ig
Clonality:	Polyclonal
Immunogen:	KLH conjugated synthetic peptide between 39-68 amino acids from the N-terminal region of human ROPN1L
Specificity:	This antibody reacts to ROPN1L.
Formulation:	PBS State: Aff - Purified State: Liquid purified Ig fraction Preservative: 0.09% (W/V) sodium azide
Concentration:	lot specific
Purification:	Affinity chromatography on Protein A
Conjugation:	Unconjugated
Storage:	Store the antibody undiluted at 2-8°C for one month or (in aliquots) at -20°C for longer. Avoid repeated freezing and thawing.
Stability:	Shelf life: one year from despatch.
Predicted Protein Size:	26107 Da
Gene Name:	rhophilin associated tail protein 1 like
Database Link:	Entrez Gene 252967 Mouse Entrez Gene 83853 Human Q96C74



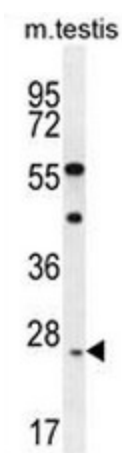
[View online »](#)

Background:

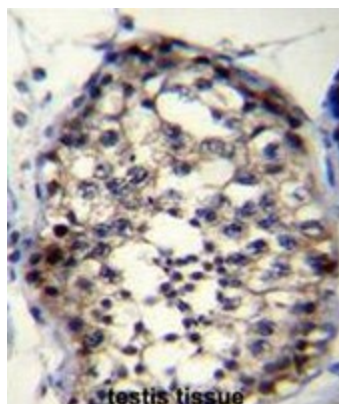
The protein encoded by this gene is a sperm protein, which interacts with A-kinase anchoring protein, AKAP3, through the amphipathic helix region of AKAP3. Type II regulatory subunit of cAMP-dependent protein kinase (PKARII) also binds to this helix domain of AKAP3, which allows PKARII to be targeted to specific subcellular compartments. It is suggested that sperm contains several proteins that bind to AKAPs in a manner similar to PKARII, and this encoded protein may be one of them.

Synonyms:

Ropporin-1-like protein, ROPN1-like protein

Product images:

ROPN1L Antibody (N-term) western blot analysis in mouse testis tissue lysates (35ug/lane). This demonstrates the ROPN1L antibody detected the ROPN1L protein (arrow).



ROPN1L Antibody (N-term) immunohistochemistry analysis in formalin fixed and paraffin embedded human testis tissue followed by peroxidase conjugation of the secondary antibody and DAB staining. This data demonstrates the use of ROPN1L Antibody (N-term) for immunohistochemistry. Clinical relevance has not been evaluated.