

## Product datasheet for **AP53699PU-N**

### Ribonuclease T2 (RNASET2) (N-term) Rabbit Polyclonal Antibody

#### Product data:

Product Type:	Primary Antibodies
Applications:	IHC, WB
Recommended Dilution:	<b>ELISA:</b> 1/1000. <b>Western Blot:</b> 1/100 - 1/500. <b>Immunohistochemistry on paraffin sections:</b> 1/50 - 1/100.
Reactivity:	Human
Host:	Rabbit
Isotype:	Ig
Clonality:	Polyclonal
Immunogen:	KLH conjugated synthetic peptide between 13-40 amino acids from the N-terminal region of human RNT2
Specificity:	This antibody reacts to RNT2.
Formulation:	PBS State: Aff - Purified State: Liquid purified Ig fraction Preservative: 0.09% (W/V) sodium azide
Concentration:	lot specific
Purification:	Affinity chromatography on Protein A
Conjugation:	Unconjugated
Storage:	Store the antibody undiluted at 2-8°C for one month or (in aliquots) at -20°C for longer. Avoid repeated freezing and thawing.
Stability:	Shelf life: one year from despatch.
Predicted Protein Size:	29481 Da
Gene Name:	ribonuclease T2
Database Link:	<a href="#">Entrez Gene 8635 Human</a> <a href="#">O00584</a>



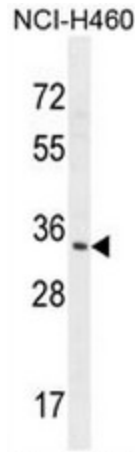
[View online »](#)

**Background:** This ribonuclease gene is a novel member of the Rh/T2/S-glycoprotein class of extracellular ribonucleases. It is a single copy gene that maps to 6q27, a region associated with human malignancies and chromosomal rearrangement.

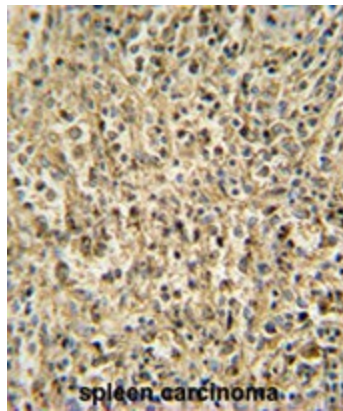
**Synonyms:** Ribonuclease T2, Ribonuclease 6, RNASE6PL

**Protein Families:** Secreted Protein

**Product images:**



RNT2 Antibody (N-term) western blot analysis in NCI-H460 cell line lysates (35ug/lane). This demonstrates the RNT2 antibody detected the RNT2 protein (arrow).



RNT2 antibody (N-term) immunohistochemistry analysis in formalin fixed and paraffin embedded human spleen carcinoma followed by peroxidase conjugation of the secondary antibody and DAB staining. This data demonstrates the use of the RNT2 antibody (N-term) for immunohistochemistry. Clinical relevance has not been evaluated.