

Product datasheet for **AP53698PU-N**

RNase H2 subunit C (RNASEH2C) (Center) Rabbit Polyclonal Antibody

Product data:

Product Type:	Primary Antibodies
Applications:	FC, WB
Recommended Dilution:	ELISA: 1/1000. Western Blot: 1/100 - 1/500. Immunohistochemistry on paraffin sections: 1/10 - 1/50. Flow Cytometry: 1/10 - 1/50.
Reactivity:	Human
Host:	Rabbit
Isotype:	Ig
Clonality:	Polyclonal
Immunogen:	KLH conjugated synthetic peptide between 87~116 amino acids from the Center region of human RNH2C
Specificity:	This antibody reacts to RNH2C.
Formulation:	PBS State: Aff - Purified State: Liquid purified Ig fraction Preservative: 0.09% (W/V) sodium azide
Concentration:	lot specific
Purification:	Affinity chromatography on Protein A
Conjugation:	Unconjugated
Storage:	Store the antibody undiluted at 2-8°C for one month or (in aliquots) at -20°C for longer. Avoid repeated freezing and thawing.
Stability:	Shelf life: one year from despatch.
Predicted Protein Size:	17840 Da
Gene Name:	ribonuclease H2 subunit C
Database Link:	Entrez Gene 84153 Human Q8TDP1



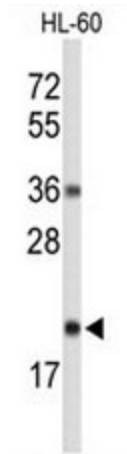
[View online »](#)

Background: RNH2C encodes a ribonuclease H subunit that can cleave ribonucleotides from RNA:DNA duplexes.

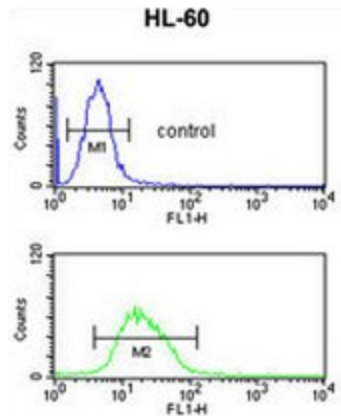
Synonyms: Ribonuclease H2 subunit C, RNase H2 subunit C, RNase H1 small subunit, AYP1, AGS3

Protein Pathways: DNA replication

Product images:



Western blot analysis of RNH2C Antibody (Center) in HL-60 cell line lysates (35ug/lane). RNH2C (arrow) was detected using the purified Pab.



RNH2C Antibody (Center) flow cytometric analysis of HL-60 cells (bottom histogram) compared to a negative control cell (top histogram).FITC-conjugated goat-anti-rabbit secondary antibodies were used for the analysis.