

Product datasheet for **AP53692PU-N**

RNF38 (N-term) Rabbit Polyclonal Antibody

Product data:

Product Type:	Primary Antibodies
Applications:	WB
Recommended Dilution:	ELISA: 1/1000. Western Blot: 1/100 - 1/500.
Reactivity:	Human
Host:	Rabbit
Isotype:	Ig
Clonality:	Polyclonal
Immunogen:	KLH conjugated synthetic peptide between 47-77 amino acids from the N-terminal region of human RNF38
Specificity:	This antibody reacts to RNF38.
Formulation:	PBS State: Aff - Purified State: Liquid purified Ig fraction Preservative: 0.09% (W/V) sodium azide
Concentration:	lot specific
Purification:	Affinity chromatography on Protein A
Conjugation:	Unconjugated
Storage:	Store the antibody undiluted at 2-8°C for one month or (in aliquots) at -20°C for longer. Avoid repeated freezing and thawing.
Stability:	Shelf life: one year from despatch.
Predicted Protein Size:	57595 Da
Gene Name:	ring finger protein 38
Database Link:	Entrez Gene 152006 Human Q9H0F5



[View online »](#)

Background:

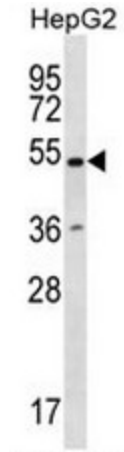
This gene encodes a protein with a coiled-coil motif and a RING-H2 motif (C3H2C2) at its carboxy-terminus. The RING motif is a zinc-binding domain found in a large set of proteins playing roles in diverse cellular processes including oncogenesis, development, signal transduction, and apoptosis. Multiple transcript variants encoding different isoforms have been found for this gene.

Synonyms:

RING finger protein 38

Protein Families:

Druggable Genome

Product images:

RNF38 Antibody (N-term) western blot analysis in HepG2 cell line lysates (35ug/lane). This demonstrates the RNF38 antibody detected the RNF38 protein (arrow).