

## Product datasheet for **AP53690PU-N**

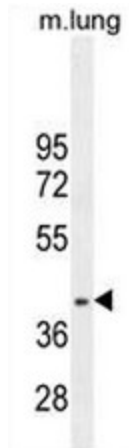
### **RNF215 (C-term) Rabbit Polyclonal Antibody**

#### **Product data:**

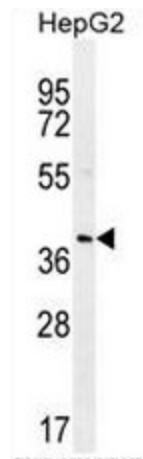
Product Type:	Primary Antibodies
Applications:	IHC, WB
Recommended Dilution:	<b>ELISA:</b> 1/1000. <b>Western Blot:</b> 1/100 - 1/500. <b>Immunohistochemistry on paraffin sections:</b> 1/10 - 1/50.
Reactivity:	Human, Mouse
Host:	Rabbit
Isotype:	Ig
Clonality:	Polyclonal
Immunogen:	KLH conjugated synthetic peptide between 273-303 amino acids from the C-terminal region of human RNF215
Specificity:	This antibody reacts to RNF215.
Formulation:	PBS State: Aff - Purified State: Liquid purified Ig fraction Preservative: 0.09% (W/V) sodium azide
Concentration:	lot specific
Purification:	Affinity chromatography on Protein A
Conjugation:	Unconjugated
Storage:	Store the antibody undiluted at 2-8°C for one month or (in aliquots) at -20°C for longer. Avoid repeated freezing and thawing.
Stability:	Shelf life: one year from despatch.
Gene Name:	ring finger protein 215
Database Link:	<a href="#">Entrez Gene 200312 Human Q9Y6U7</a>
Synonyms:	RING finger protein 215
Note:	<b>Molecular Weight:</b> 41101 Da



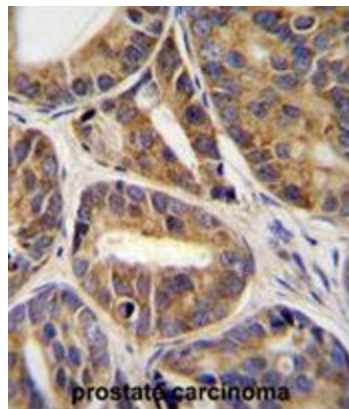
[View online »](#)

**Product images:**


RNF215 Antibody (C-term) western blot analysis in mouse lung tissue lysates (35ug/lane). This demonstrates the RNF215 antibody detected the RNF215 protein (arrow).



RNF215 Antibody (C-term) western blot analysis in HepG2 cell line lysates (35ug/lane). This demonstrates the RNF215 antibody detected the RNF215 protein (arrow).



RNF215 Antibody (C-term) immunohistochemistry analysis in formalin fixed and paraffin embedded human prostate carcinoma tissue followed by peroxidase conjugation of the secondary antibody and DAB staining. This data demonstrates the use of RNF215 Antibody (C-term) for immunohistochemistry. Clinical relevance has not been evaluated.