

Product datasheet for **AP53688PU-N**

RNF19B (Center) Rabbit Polyclonal Antibody

Product data:

Product Type:	Primary Antibodies
Applications:	FC, WB
Recommended Dilution:	ELISA: 1/1000. Western Blot: 1/100 - 1/500. Flow Cytometry: 1/10 - 1/50.
Reactivity:	Human
Host:	Rabbit
Isotype:	Ig
Clonality:	Polyclonal
Immunogen:	KLH conjugated synthetic peptide between 376-405 amino acids from the Central region of human RNF19B
Specificity:	This antibody reacts to RNF19B.
Formulation:	PBS State: Aff - Purified State: Liquid purified Ig fraction Preservative: 0.09% (W/V) sodium azide.
Concentration:	lot specific
Purification:	Affinity chromatography on Protein A
Conjugation:	Unconjugated
Storage:	Store the antibody undiluted at 2-8°C for one month or (in aliquots) at -20°C for longer. Avoid repeated freezing and thawing.
Stability:	Shelf life: one year from despatch.
Predicted Protein Size:	77925 Da
Gene Name:	ring finger protein 19B
Database Link:	Entrez Gene 127544 Human Q6ZMZO
Background:	IBRDC3 is a cytolysis-associated transmembrane protein expressed in natural killer (NK) cells and T lymphocytes following cytokine stimulation (Kozlowski et al., 1999 [PubMed 10438909]).

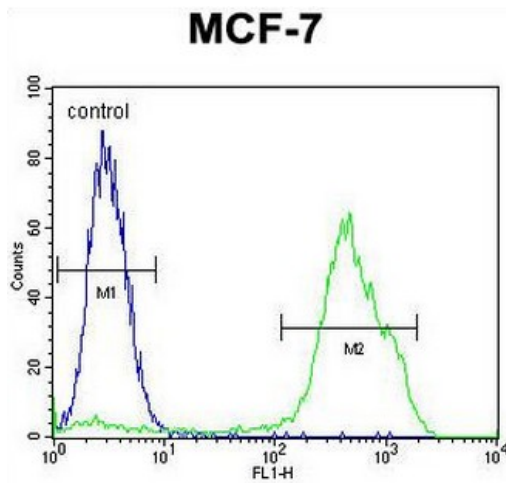
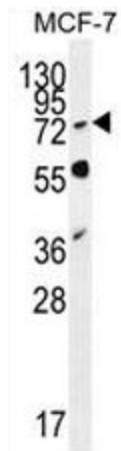


[View online »](#)

Synonyms: IBRDC3, NKLAM, Natural killer lytic-associated molecule, RING finger protein 19B

Protein Families: Druggable Genome, Transmembrane

Product images:



RNF19B Antibody (Center) flow cytometric analysis of MCF-7 cells (right histogram) compared to a negative control cell (left histogram). FITC-conjugated goat-anti-rabbit secondary antibodies were used for the analysis.