

Product datasheet for **AP53685PU-N**

RNF160 (LTN1) (Center) Rabbit Polyclonal Antibody

Product data:

Product Type:	Primary Antibodies
Applications:	WB
Recommended Dilution:	ELISA: 1/1000. Western Blot: 1/100-1/500.
Reactivity:	Human
Host:	Rabbit
Isotype:	Ig
Clonality:	Polyclonal
Immunogen:	KLH conjugated synthetic peptide between 1086-1115 amino acids from the Central region of Human RNF160.
Specificity:	This antibody recognizes Human RNF160 (Center).
Formulation:	PBS State: Aff - Purified State: Liquid purified Ig fraction Preservative: 0.09% Sodium Azide
Concentration:	lot specific
Purification:	Affinity Chromatography on Protein A
Conjugation:	Unconjugated
Storage:	Store undiluted at 2-8°C for one month or (in aliquots) at -20°C for longer. Avoid repeated freezing and thawing.
Stability:	Shelf life: one year from despatch.
Gene Name:	listerin E3 ubiquitin protein ligase 1
Database Link:	Entrez Gene 26046 Human O94822
Background:	Like most RING finger proteins, LTN1 functions as an E3 ubiquitin ligase (Chu et al., 2009 [PubMed 19196968]). [supplied by OMIM].

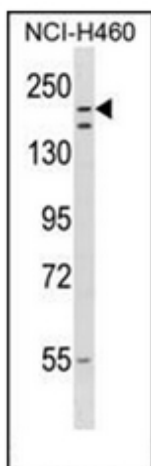


[View online »](#)

Synonyms: RING finger protein 160, Zinc finger protein 294, C21orf10, C21orf98, KIAA0714

Note: **Molecular Weight:** 200552 Da

Product images:



Western blot analysis of RNF160 Antibody in NCI-H460 cell line lysates (35ug/lane). This demonstrates the RNF160 antibody detected the RNF160 protein (arrow).