

Product datasheet for **AP53683PU-N**

RNF11 (Center) Rabbit Polyclonal Antibody

Product data:

Product Type:	Primary Antibodies
Applications:	FC, IHC, WB
Recommended Dilution:	ELISA: 1/1000. Western Blot: 1/100-1/500. Immunohistochemistry on Paraffin Sections: 1/10-1/50. Flow Cytometry: 1/10-1/50.
Reactivity:	Human
Host:	Rabbit
Isotype:	Ig
Clonality:	Polyclonal
Immunogen:	KLH conjugated synthetic peptide between 63-80 amino acids from the Central region of Human RNF11
Specificity:	This antibody recognizes Human RNF11 (Center).
Formulation:	PBS State: Aff - Purified State: Liquid purified Ig fraction Preservative: 0.09% Sodium Azide
Concentration:	lot specific
Purification:	Affinity Chromatography on Protein A
Conjugation:	Unconjugated
Storage:	Store undiluted at 2-8°C for one month or (in aliquots) at -20°C for longer. Avoid repeated freezing and thawing.
Stability:	Shelf life: one year from despatch.
Gene Name:	ring finger protein 11
Database Link:	Entrez Gene 26994 Human Q9Y3C5



[View online »](#)

Background:

The protein encoded by this gene contains a RING-H2 finger motif, which is known to be important for protein-protein interactions. The expression of this gene has been shown to be induced by mutant RET proteins (MEN2A/MEN2B). The germline mutations in RET gene are known to be responsible for the development of multiple endocrine neoplasia (MEN). [provided by RefSeq].

Synonyms:

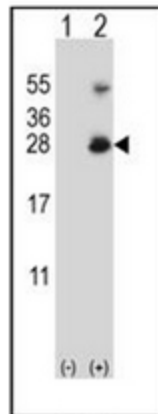
RING finger protein 11, CGI-123

Note:

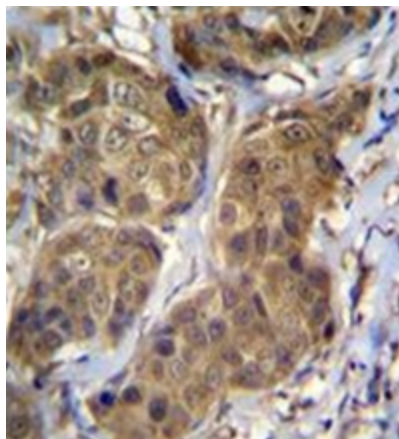
Molecular Weight: 17444 Da

Protein Families:

Druggable Genome

Product images:


Western blot analysis of RNF11 (arrow) using RNF11 Antibody (Center). 293 cell lysates (2 ug/lane) either nontransfected (Lane 1) or transiently transfected (Lane 2) with the RNF11 gene.



Formalin fixed, paraffin embedded human breast carcinoma stained with RNF11 Antibody (Center) followed by peroxidase conjugation of the secondary antibody and DAB staining