

Product datasheet for **AP53680PU-N**

RNF185 (Center) Rabbit Polyclonal Antibody

Product data:

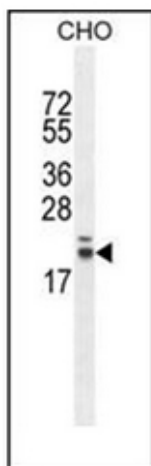
Product Type:	Primary Antibodies
Applications:	FC, WB
Recommended Dilution:	ELISA: 1/1000 Western Blot: 1/100-1/500. Flow Cytometry: 1/10-1/50.
Reactivity:	Hamster, Human, Mouse
Host:	Rabbit
Isotype:	Ig
Clonality:	Polyclonal
Immunogen:	KLH conjugated synthetic peptide between 91-121 amino acids from the Central region of Human RNF185.
Specificity:	This antibody recognizes RNF185 (Center).
Formulation:	PBS State: Aff - Purified State: Liquid purified Ig fraction Preservative: 0.09% Sodium Azide
Concentration:	lot specific
Purification:	Affinity Chromatography on Protein A
Conjugation:	Unconjugated
Storage:	Store undiluted at 2-8°C for one month or (in aliquots) at -20°C for longer. Avoid repeated freezing and thawing.
Stability:	Shelf life: one year from despatch.
Gene Name:	ring finger protein 185
Database Link:	Entrez Gene 91445 Human Q96GF1
Synonyms:	RING finger protein 185
Note:	Molecular Weight: 20459 Da



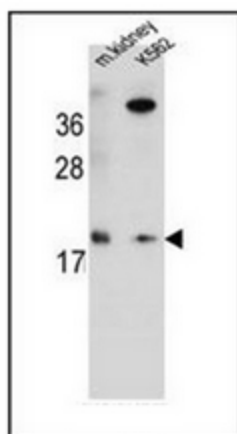
[View online »](#)

Protein Families: Druggable Genome, Transmembrane

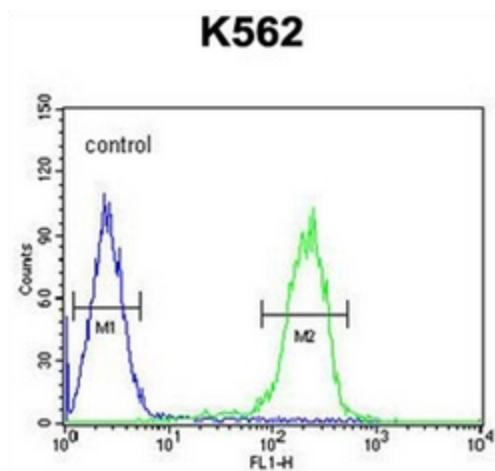
Product images:



Western blot analysis of RNF185 Antibody in CHO cell line lysates (35ug/lane). This demonstrates the RN185 antibody detected the RN185 protein (arrow).



Western blot analysis of RNF185 Antibody in Mouse kidney tissue and K562 cell line lysates (35ug/lane). This demonstrates the RN185 antibody detected the RN185 protein (arrow).



Flow cytometric analysis of K562 cells using RNF185 Antibody (right histogram) compared to a negative control cell (left histogram). FITC-conjugated goat-anti-rabbit secondary antibodies were used for the analysis.