

## Product datasheet for **AP53679PU-N**

### **FAM82B (RMDN1) (N-term) Rabbit Polyclonal Antibody**

#### **Product data:**

Product Type:	Primary Antibodies
Applications:	IHC, WB
Recommended Dilution:	<b>ELISA:</b> 1/1000. <b>Western Blot:</b> 1/100-1/500. <b>Immunohistochemistry on Paraffin Sections:</b> 1/10-1/50.
Reactivity:	Human, Mouse
Host:	Rabbit
Isotype:	Ig
Clonality:	Polyclonal
Immunogen:	KLH conjugated synthetic peptide between 83-112 amino acids from the N-terminal region of Human RMD1.
Specificity:	This antibody recognizes Human and Mouse FAM82B (N-term).
Formulation:	PBS State: Aff - Purified State: Liquid purified Ig fraction Preservative: 0.09% (W/V) Sodium Azide
Concentration:	lot specific
Purification:	Protein A column, followed by peptide affinity purification
Conjugation:	Unconjugated
Storage:	Store undiluted at 2-8°C for one month or (in aliquots) at -20°C for longer. Avoid repeated freezing and thawing.
Stability:	Shelf life: one year from despatch.
Gene Name:	regulator of microtubule dynamics 1
Database Link:	<a href="#">Entrez Gene 51115 Human</a> <a href="#">Q96DB5</a>



[View online »](#)

**Background:**

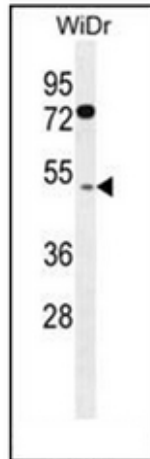
FAM82B belongs to the FAM82/RMD family and contains two TPR repeats. The specific function of FAM82B is not yet known.

**Synonyms:**

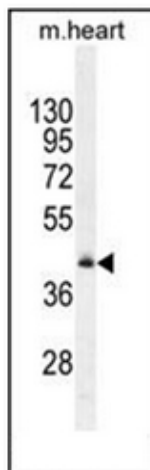
RMD-1, hRMD1, CGI-90

**Note:**

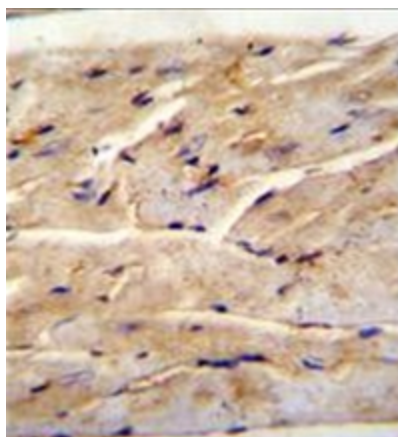
**Molecular Weight:** 35808 Da

**Product images:**

Western blot analysis of FAM82B Antibody (N-term) in WiDr cell line lysates (35ug/lane). This demonstrates the RMD1 antibody detected the RMD1 protein (arrow).



Western blot analysis of FAM82B Antibody (N-term) in Mouse heart tissue lysates (35ug/lane). This demonstrates the RMD1 antibody detected the RMD1 protein (arrow).



Formalin fixed, paraffin embedded Mouse heart tissue stained with FAM82B Antibody (N-term) followed by peroxidase conjugation of the secondary antibody and DAB staining.