

Product datasheet for **AP53672PU-N**

CLVS2 (C-term) Rabbit Polyclonal Antibody

Product data:

Product Type:	Primary Antibodies
Applications:	IHC, WB
Recommended Dilution:	ELISA: 1/1000 Western Blot: 1/100-1/500. Immunohistochemistry on Paraffin Sections: 1/10-1/50.
Reactivity:	Human, Mouse
Host:	Rabbit
Isotype:	Ig
Clonality:	Polyclonal
Immunogen:	KLH conjugated synthetic peptide between 258-287 amino acids from the C-terminal region of human RLBP1L2
Specificity:	This antibody recognizes Mouse RLBP1L2 (C-term).
Formulation:	PBS State: Aff - Purified State: Liquid purified Ig fraction Preservative: 0.09% Sodium Azide
Concentration:	lot specific
Purification:	Affinity Chromatography on Protein A
Conjugation:	Unconjugated
Storage:	Store undiluted at 2-8°C for one month or (in aliquots) at -20°C for longer. Avoid repeated freezing and thawing.
Stability:	Shelf life: one year from despatch.
Gene Name:	clavesin 2
Database Link:	Entrez Gene 134829 Human Q5SYC1



[View online »](#)

Background:

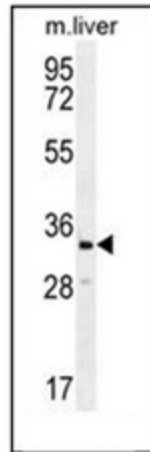
Required for normal morphology of late endosomes and/or lysosomes in neurons (By similarity). Binds phosphatidylinositol 3,5-bisphosphate (PtdIns(3,5)P2).

Synonyms:

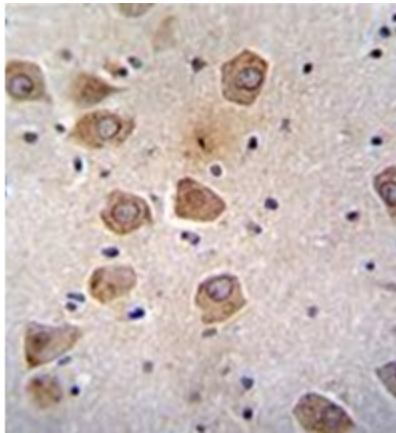
Clavesin-2, CLVS2, C6orf212, C6orf213

Note:

Molecular Weight: 38000 Da

Product images:


Western blot analysis of RLBP1L2 Antibody (C-term) in Mouse liver tissue lysates (35ug/lane). This demonstrates the RLBP1L2 antibody detected the RLBP1L2 protein (arrow).



Formalin fixed, paraffin embedded human brain tissue stained with RLBP1L2 Antibody (C-term) followed by peroxidase conjugation of the secondary antibody and DAB staining. This data demonstrates the use of RLBP1L2 Antibody (C-term) for immunohistochemistry. Clinical relevance has not been evaluated.