

## Product datasheet for **AP53671PU-N**

### RIT2 (N-term) Rabbit Polyclonal Antibody

#### Product data:

Product Type:	Primary Antibodies
Applications:	WB
Recommended Dilution:	<b>ELISA:</b> 1/1000. <b>Western Blot:</b> 1/100-1/500.
Reactivity:	Human
Host:	Rabbit
Isotype:	Ig
Clonality:	Polyclonal
Immunogen:	KLH conjugated synthetic peptide between 40-69 amino acids from the N-terminal region of Human RIT2.
Specificity:	This antibody recognizes Human RIT2 (N-term).
Formulation:	PBS State: Aff - Purified State: Liquid purified Ig fraction Preservative: 0.09% Sodium Azide
Concentration:	lot specific
Purification:	Affinity Chromatography on Protein A
Conjugation:	Unconjugated
Storage:	Store undiluted at 2-8°C for one month or (in aliquots) at -20°C for longer. Avoid repeated freezing and thawing.
Stability:	Shelf life: one year from despatch.
Gene Name:	Ras like without CAAX 2
Database Link:	<a href="#">Entrez Gene 6014 Human Q99578</a>
Background:	RIN belongs to the RAS (HRAS; MIM 190020) superfamily of small GTPases (Shao et al., 1999 [PubMed 10545207]). [supplied by OMIM].

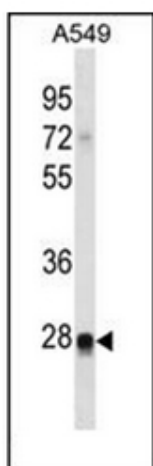


[View online »](#)

Synonyms: RIN, ROC2

Note: **Molecular Weight:** 24668 Da

**Product images:**



Western blot analysis of RIT2 Antibody (N-term) in A549 cell line lysates (35ug/lane). This demonstrates the RIT2 antibody detected the RIT2 protein (arrow).