

Product datasheet for **AP53668PU-N**

RILPL2 (Center) Rabbit Polyclonal Antibody

Product data:

Product Type:	Primary Antibodies
Applications:	IHC, WB
Recommended Dilution:	ELISA: 1/1000. Western Blot: 1/100-1/500. Immunohistochemistry on Paraffin Sections: 1/50-1/100.
Reactivity:	Hamster, Human
Host:	Rabbit
Isotype:	Ig
Clonality:	Polyclonal
Immunogen:	KLH conjugated synthetic peptide between 120-149 amino acids from the Central region of Human RILPL2.
Specificity:	This antibody recognizes Human and Hamster RILPL2 (Center).
Formulation:	PBS State: Aff - Purified State: Liquid purified Ig fraction Preservative: 0.09% Sodium Azide
Concentration:	lot specific
Purification:	Affinity Chromatography on Protein A
Conjugation:	Unconjugated
Storage:	Store undiluted at 2-8°C for one month or (in aliquots) at -20°C for longer. Avoid repeated freezing and thawing.
Stability:	Shelf life: one year from despatch.
Gene Name:	Rab interacting lysosomal protein like 2
Database Link:	Entrez Gene 196383 Human Q969X0
Background:	Does not regulate lysosomal morphology and distribution.

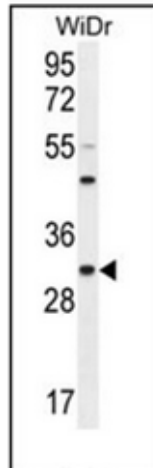


[View online »](#)

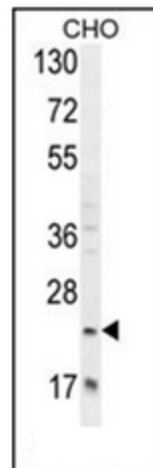
Synonyms: RLP2, RILP-like protein 2

Note: **Molecular Weight:** 23986 Da

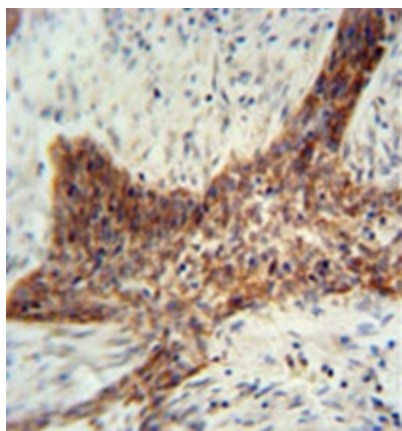
Product images:



Western blot analysis of RILPL2 Antibody (Center) in WiDr cell line lysates (35ug/lane). This demonstrates the RILPL2 antibody detected the RILPL2 protein (arrow).



Western blot analysis of RILPL2 Antibody (Center) in CHO cell line lysates (35ug/lane). This demonstrates the RILPL2 antibody detected the RILPL2 protein (arrow).



Formalin fixed, paraffin embedded human lung carcinoma stained with RILPL2 Antibody (Center) followed by peroxidase conjugation of the secondary antibody and DAB staining. This data demonstrates the use of the RILPL2 antibody (Center) for immunohistochemistry. Clinical relevance has not been evaluated.