

## Product datasheet for **AP53667PU-N**

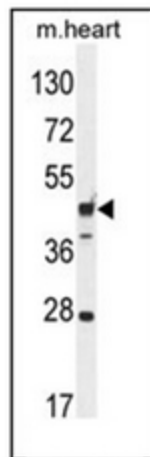
### RILPL1 (C-term) Rabbit Polyclonal Antibody

#### Product data:

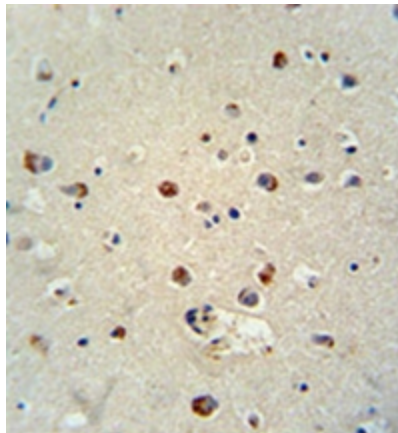
Product Type:	Primary Antibodies
Applications:	IHC, WB
Recommended Dilution:	<b>ELISA:</b> 1/1000 <b>Western Blot:</b> 1/100-1/500. <b>Immunohistochemistry on Paraffin Sections:</b> 1/50-1/100.
Reactivity:	Human, Mouse
Host:	Rabbit
Isotype:	Ig
Clonality:	Polyclonal
Immunogen:	KLH conjugated synthetic peptide between 344-374 amino acids from the C-terminal region of Human RILPL1.
Specificity:	This antibody recognizes Human and Mouse RILPL1 (C-term).
Formulation:	PBS State: Aff - Purified State: Liquid purified Ig fraction Preservative: 0.09% Sodium Azide
Concentration:	lot specific
Purification:	Affinity Chromatography on Protein A
Conjugation:	Unconjugated
Storage:	Store undiluted at 2-8°C for one month or (in aliquots) at -20°C for longer. Avoid repeated freezing and thawing.
Stability:	Shelf life: one year from despatch.
Gene Name:	Rab interacting lysosomal protein-like 1
Database Link:	<a href="#">Entrez Gene 75695 Mouse</a> <a href="#">Entrez Gene 353116 Human</a> <a href="#">Q5EBL4</a>
Synonyms:	RILP-like protein 1
Note:	<b>Molecular Weight:</b> 47108 Da



[View online »](#)

**Product images:**

Western blot analysis of RILPL1 Antibody (C-term) in Mouse heart tissue lysates (35ug/lane). This demonstrates the RILPL1 antibody detected the RILPL1 protein (arrow).



Formalin fixed, paraffin embedded human brain tissue stained with RILPL1 Antibody (C-term) followed by peroxidase conjugation of the secondary antibody and DAB staining. This data demonstrates the use of the RILPL1 antibody (C-term) for immunohistochemistry. Clinical relevance has not been evaluated.