

Product datasheet for **AP53665PU-N**

RICH2 (ARHGAP44) (C-term) Rabbit Polyclonal Antibody

Product data:

Product Type:	Primary Antibodies
Applications:	FC, IHC, WB
Recommended Dilution:	ELISA: 1/1000 Western Blot: 1/100-1/500. Flow Cytometry: 1/10-1/50. Immunohistochemistry on Paraffin Sections: 1/50-1/100.
Reactivity:	Human
Host:	Rabbit
Isotype:	Ig
Clonality:	Polyclonal
Immunogen:	KLH conjugated synthetic peptide between 791-819 amino acids from the C-terminal region of Human RICH2.
Specificity:	This antibody recognizes Human RICH2 (C-term).
Formulation:	PBS State: Aff - Purified State: Liquid purified Ig fraction Preservative: 0.09% Sodium Azide
Concentration:	lot specific
Purification:	Affinity Chromatography on Protein A
Conjugation:	Unconjugated
Storage:	Store undiluted at 2-8°C for one month or (in aliquots) at -20°C for longer. Avoid repeated freezing and thawing.
Stability:	Shelf life: one year from despatch.
Gene Name:	Rho GTPase activating protein 44
Database Link:	Entrez Gene 9912 Human Q17R89



[View online »](#)

Background:

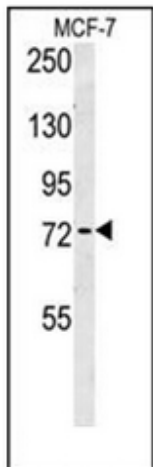
GTPase activator for the Rho-type GTPases by converting them to an inactive GDP-bound state. Acts as a GTPase activator in vitro for CDC42 and RAC1.

Synonyms:

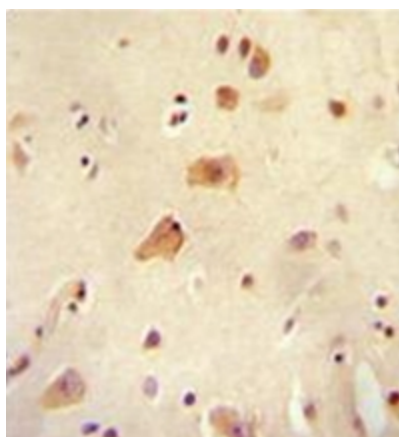
RICH-2, KIAA0672

Note:

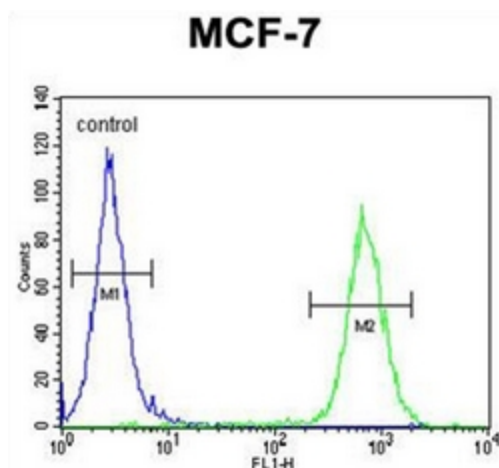
Molecular Weight: 89247 Da

Product images:


Western blot analysis of RICH2 Antibody (C-term) in MCF-7 cell line lysates (35ug/lane). This demonstrates the RICH2 antibody detected the RICH2 protein (arrow).



Formalin fixed, paraffin embedded human brain tissue stained with RICH2 Antibody (C-term) followed by peroxidase conjugation of the secondary antibody and DAB staining.



Flow cytometric analysis of MCF-7 cells using RICH2 Antibody (C-term) (right histogram) compared to a negative control cell (left histogram). FITC-conjugated goat-anti-rabbit secondary antibodies were used for the analysis.