

## Product datasheet for **AP53664PU-N**

### RIC3 (C-term) Rabbit Polyclonal Antibody

#### Product data:

Product Type:	Primary Antibodies
Applications:	IHC, WB
Recommended Dilution:	<b>ELISA:</b> 1/1000 <b>Western Blot:</b> 1/100-1/500. <b>Immunohistochemistry on Paraffin Sections:</b> 1/10-1/50.
Reactivity:	Human
Host:	Rabbit
Isotype:	Ig
Clonality:	Polyclonal
Immunogen:	KLH conjugated synthetic peptide between 319-348 amino acids from the C-terminal region of Human RIC3
Specificity:	This antibody recognizes Human RIC3 (C-term).
Formulation:	PBS State: Aff - Purified State: Liquid purified Ig fraction Preservative: 0.09% Sodium Azide
Concentration:	lot specific
Purification:	Affinity Chromatography on Protein A
Conjugation:	Unconjugated
Storage:	Store undiluted at 2-8°C for one month or (in aliquots) at -20°C for longer. Avoid repeated freezing and thawing.
Stability:	Shelf life: one year from despatch.
Gene Name:	RIC3 acetylcholine receptor chaperone
Database Link:	<a href="#">Entrez Gene 79608 Human Q7Z5B4</a>



[View online »](#)

**Background:**

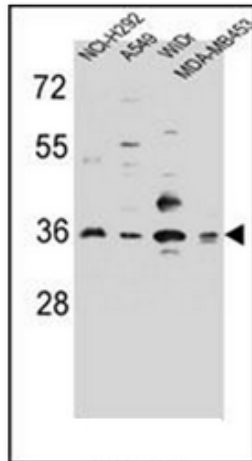
RIC3 is a protein associated with nicotinic acetylcholine receptors (nAChRs), neurotransmitter-gated ion channels expressed at the neuromuscular junction and within the central and peripheral nervous systems, that can enhance functional expression of multiple nAChR subtypes (Lansdell et al., 2005 [PubMed 16120769]). [supplied by OMIM].

**Synonyms:**

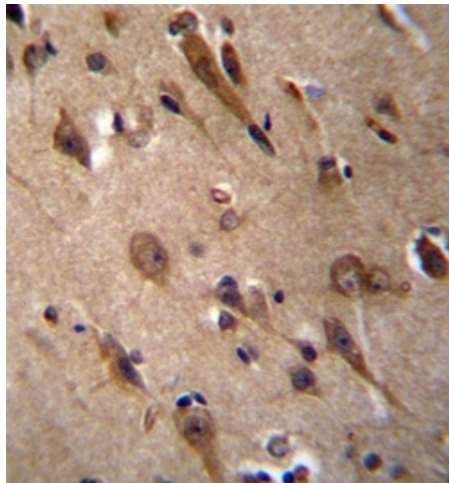
Protein RIC-3

**Note:****Molecular Weight:** 41092 Da**Protein Families:**

Transmembrane

**Product images:**

Western blot analysis of RIC3 Antibody (C-term) in NCI-H292, A549, WiDr, MDA-MB453 cell line lysates (35ug/lane). This demonstrates the RIC3 antibody detected the RIC3 protein (arrow).



Formalin fixed, paraffin embedded human brain tissue stained with RIC3 Antibody (C-term) followed by peroxidase conjugation of the secondary antibody and DAB staining.