

## Product datasheet for **AP53663PU-N**

### **RHOXF2 (N-term) Rabbit Polyclonal Antibody**

#### **Product data:**

Product Type:	Primary Antibodies
Applications:	WB
Recommended Dilution:	<b>ELISA:</b> 1/1000 <b>Western Blot:</b> 1/100-1/500.
Reactivity:	Human
Host:	Rabbit
Isotype:	Ig
Clonality:	Polyclonal
Immunogen:	KLH conjugated synthetic peptide between 7-35 amino acids from the N-terminal region of Human RHOXF2.
Specificity:	This antibody recognizes Human RHOXF2 (N-term).
Formulation:	PBS State: Aff - Purified State: Liquid purified Ig fraction Preservative: 0.09% Sodium Azide
Concentration:	lot specific
Purification:	Affinity Chromatography on Protein A
Conjugation:	Unconjugated
Storage:	Store undiluted at 2-8°C for one month or (in aliquots) at -20°C for longer. Avoid repeated freezing and thawing.
Stability:	Shelf life: one year from despatch.
Gene Name:	Rhox homeobox family member 2
Database Link:	<a href="#">Entrez Gene 84528 Human Q9BQY4</a>
Background:	RHOXF2 (Rhox homeobox family member 2) belongs to the paired like homeobox family.



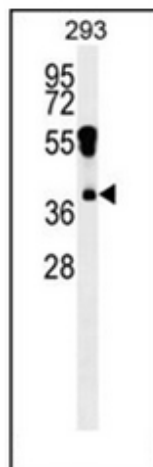
[View online »](#)

Synonyms: PEPP2, PEPP-2, THG1

Note: **Molecular Weight:** 31692 Da

Protein Families: Transcription Factors

### Product images:



Western blot analysis of RHOXF2 Antibody (N-term) in 293 cell line lysates (35ug/lane). This demonstrates the RHOXF2 antibody detected the RHOXF2 protein (arrow).