

## Product datasheet for **AP53661PU-N**

### **RHOG (C-term) Rabbit Polyclonal Antibody**

#### **Product data:**

|                       |  |
|-----------------------|--|
| Product Type:         | Primary Antibodies   |
| Applications:         | WB   |
| Recommended Dilution: | <b>ELISA:</b> 1/1000.<br><b>Western Blot:</b> 1/100-1/500.   |
| Reactivity:           | Human  |
| Host:                 | Rabbit   |
| Isotype:              | Ig   |
| Clonality:            | Polyclonal   |
| Immunogen:            | KLH conjugated synthetic peptide between 98-128 amino acids from the C-terminal region of Human RHOG.                |
| Specificity:          | This antibody recognizes Human RHOG (C-term).  |
| Formulation:          | PBS<br>State: Aff - Purified<br>State: Liquid purified Ig fraction<br>Preservative: 0.09% Sodium Azide               |
| Concentration:        | lot specific   |
| Purification:         | Affinity Chromatography on Protein A   |
| Conjugation:          | Unconjugated   |
| Storage:              | Store undiluted at 2-8°C for one month or (in aliquots) at -20°C for longer.<br>Avoid repeated freezing and thawing. |
| Stability:            | Shelf life: one year from despatch.  |
| Gene Name:            | ras homolog family member G  |
| Database Link:        | <a href="#">Entrez Gene 391 Human P84095</a>   |



[View online »](#)

**Background:**

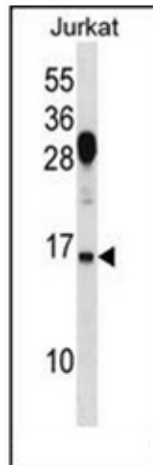
ARHG is a member of the RAS superfamily of genes, which encode GTP-binding proteins that act in the pathway of signal transduction and play a key role in the regulation of cellular functions.

**Synonyms:**

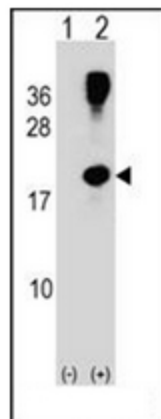
ARHG

**Note:**

**Molecular Weight:** 21309 Da

**Product images:**


Western blot analysis of RhoG Antibody (C-term) in Jurkat cell line lysates (35ug/lane). This demonstrates the RHOg antibody detected the RHOg protein (arrow).



Western blot analysis of RHOg (arrow) using RhoG Antibody (C-term). 293 cell lysates (2 ug/lane) either nontransfected (Lane 1) or transiently transfected (Lane 2) with the RHOg gene.