

Product datasheet for **AP53657PU-N**

RHEBL1 (N-term) Rabbit Polyclonal Antibody

Product data:

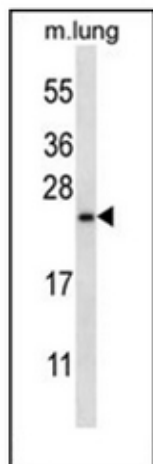
Product Type:	Primary Antibodies
Applications:	WB
Recommended Dilution:	ELISA: 1/1000. Western Blot: 1/100-1/500.
Reactivity:	Human, Mouse
Host:	Rabbit
Isotype:	Ig
Clonality:	Polyclonal
Immunogen:	KLH conjugated synthetic peptide between 24-53 amino acids from the N-terminal region of Human RHEBL1.
Specificity:	This antibody recognizes Mouse RHEBL1 (N-term).
Formulation:	PBS State: Aff - Purified State: Liquid purified Ig fraction Preservative: 0.09% Sodium Azide
Concentration:	lot specific
Purification:	Affinity Chromatography on Protein A
Conjugation:	Unconjugated
Storage:	Store undiluted at 2-8°C for one month or (in aliquots) at -20°C for longer. Avoid repeated freezing and thawing.
Stability:	Shelf life: one year from despatch.
Gene Name:	Ras homolog enriched in brain like 1
Database Link:	Entrez Gene 69159 Mouse Entrez Gene 121268 Human Q8TAI7
Background:	RHEBL1 binds GTP and exhibits intrinsic GTPase activity. May activate NF-kappa-B-mediated gene transcription. Promotes signal transduction through FRAP1, activates RPS6KB1, and is a downstream target of the small GTPase-activating proteins TSC1 and TSC2.
Synonyms:	Rheb-like protein 1, RhebL1c, Rheb2



[View online »](#)

Note: **Molecular Weight:** 20682 Da

Product images:



Western blot analysis of RHEBL1 (N-term) in Mouse lung tissue lysates (35ug/lane). This demonstrates the RHEBL1 antibody detected the RHEBL1 protein (arrow).