

## Product datasheet for **AP53656PU-N**

### RHEB (C-term) Rabbit Polyclonal Antibody

#### Product data:

Product Type:	Primary Antibodies
Applications:	IHC, WB
Recommended Dilution:	<b>Western Blot:</b> 1/1000. <b>Immunohistochemistry on Paraffin Sections:</b> 1/50-1/100.
Reactivity:	Bovine, Human, Mouse, Rat
Host:	Rabbit
Isotype:	Ig
Clonality:	Polyclonal
Immunogen:	KLH conjugated synthetic peptide between 104-134 amino acids from the C-terminal region of Human RHEB.
Formulation:	PBS State: Purified State: Liquid purified Ig fraction Preservative: 0.09% Sodium Azide
Concentration:	lot specific
Purification:	Saturated Ammonium Sulfate (SAS) precipitation followed by dialysis against PBS.
Conjugation:	Unconjugated
Storage:	Store undiluted at 2-8°C for one month or (in aliquots) at -20°C for longer. Avoid repeated freezing and thawing.
Stability:	Shelf life: one year from despatch.
Gene Name:	Ras homolog enriched in brain
Database Link:	<a href="#">Entrez Gene 19744 Mouse</a> <a href="#">Entrez Gene 26954 Rat</a> <a href="#">Entrez Gene 6009 Human</a> <a href="#">Q15382</a>



[View online »](#)

**Background:**

This gene is a member of the small GTPase superfamily and encodes a lipid-anchored, cell membrane protein with five repeats of the RAS-related GTP-binding region. This protein is vital in regulation of growth and cell cycle progression due to its role in the insulin/TOR/S6K signaling pathway. The protein has GTPase activity and shuttles between a GDP-bound form and a GTP-bound form, and farnesylation of the protein is required for this activity. Three pseudogenes have been mapped, two on chromosome 10 and one on chromosome 22

**Synonyms:**

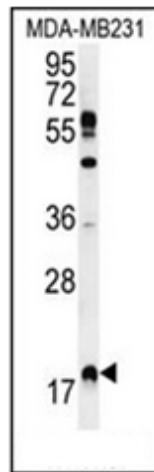
RHEB2

**Note:**

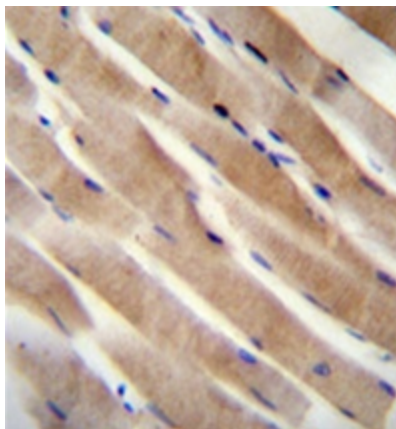
**Molecular Weight:** 20497 Da

**Protein Pathways:**

Insulin signaling pathway, mTOR signaling pathway

**Product images:**

Western blot analysis of RHEB Antibody (C-term) in MDA-MB231 cell line lysates (35ug/lane). This demonstrates the RHEB antibody detected the RHEB protein (arrow).



Formalin fixed, paraffin embedded human skeletal muscle stained with RHEB Antibody (C-term) followed by peroxidase conjugation of the secondary antibody and DAB staining. This data demonstrates the use of RHEB Antibody (C-term) for immunohistochemistry. Clinical relevance has not been evaluated.