

## Product datasheet for **AP53655PU-N**

### RHBG (C-term) Rabbit Polyclonal Antibody

#### Product data:

Product Type:	Primary Antibodies
Applications:	FC, IHC, WB
Recommended Dilution:	<b>ELISA:</b> 1/1000. <b>Western Blot:</b> 1/100-1/500. <b>Flow Cytometry:</b> 1/10-1/50. <b>Immunohistochemistry on Paraffin Sections:</b> 1/50-1/100.
Reactivity:	Human
Host:	Rabbit
Isotype:	Ig
Clonality:	Polyclonal
Immunogen:	KLH conjugated synthetic peptide between 421~450 amino acids from the C-terminal region of Human RHBG.
Specificity:	This antibody recognizes Human RHBG (C-term).
Formulation:	PBS State: Aff - Purified State: Liquid purified Ig fraction Preservative: 0.09% Sodium Azide
Concentration:	lot specific
Purification:	Affinity Chromatography on Protein A
Conjugation:	Unconjugated
Storage:	Store undiluted at 2-8°C for one month or (in aliquots) at -20°C for longer. Avoid repeated freezing and thawing.
Stability:	Shelf life: one year from despatch.
Gene Name:	Rh family B glycoprotein (gene/pseudogene)
Database Link:	<a href="#">Entrez Gene 57127 Human Q9H310</a>



[View online »](#)

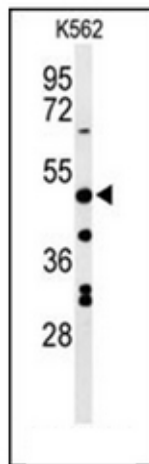
**Background:** RHBG encodes one of two non-erythroid members of the Rhesus (Rh) protein family. Non-erythroid Rh protein family members are mainly expressed in the kidney and belong to the methylammonium-ammonium permease/ammonia transporters superfamily. All Rh family proteins are predicted to be transmembrane proteins with 12 membrane spanning domains and intracytoplasmic N- and C-termini.

**Synonyms:** Rh type B glycoprotein

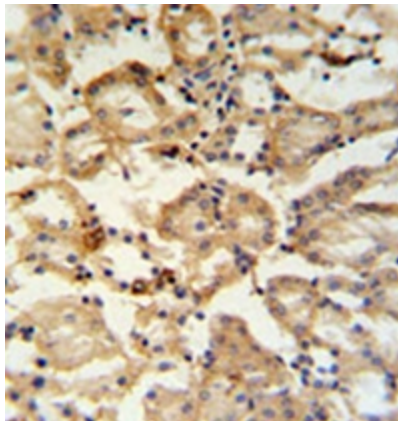
**Note:** **Molecular Weight:** 47231 Da

**Protein Families:** Transmembrane

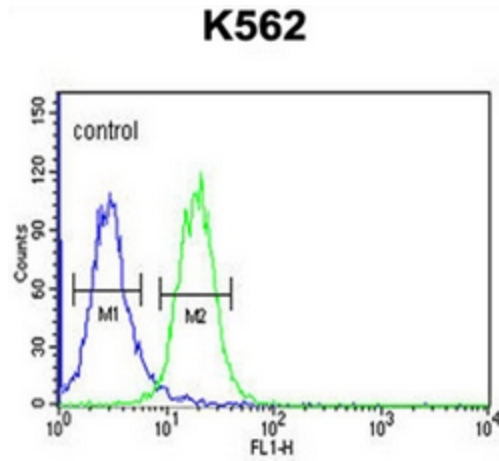
**Product images:**



Western blot analysis of RHBG Antibody (C-term) in K562 cell line lysates (35ug/lane). RHBG (arrow) was detected using the purified Pab.



Formalin fixed, paraffin embedded Mouse kidney tissue stained with RHBG Antibody (C-term) followed by peroxidase conjugation of the secondary antibody and DAB staining. This data demonstrates the use of the RHBG Antibody (C-term) for immunohistochemistry. Clinical relevance has not been evaluated.



Flow cytometric analysis of K562 cells using RHBG Antibody (C-term) (right histogram) compared to a negative control cell (left histogram). FITC-conjugated goat-anti-rabbit secondary antibodies were used for the analysis.